

DECEMBER REPORT

COVID-19 K-4 and K-12 Learning Loss Funds



SUPERINTENDENT OF PUBLIC INSTRUCTION
SHERRI A. YBARRA, Ed.S.

650 W STATE STREET, 2ND FLOOR
BOISE, IDAHO 83702
208 332 6800 OFFICE / 711 TRS
WWW.SDE.IDAHO.GOV

CREATED 12/29/2021

TABLE OF CONTENTS

EXECUTIVE SUMMARY3

BACKGROUND.....5

 K-4 Funding Formula.....5

 K-12 Funding Formula.....5

 Participation6

 Reporting Requirements6

REIMBURSEMENTS.....8

PROGRAM SUMMARY.....9

ASSESSMENT SUMMARY.....10

APPENDIX A14

EXECUTIVE SUMMARY

This document meets the December 2021 reporting requirement associated with K-4 and K-12 learning loss funds (\$20 million recommended by the Governor and allocated by the Legislature) distributed to districts and charters following the 2021 legislative session.

The main findings are as follows:

- Nearly two-thirds of districts and charter schools applied for these funds.
- Of the \$20 million of available funds, districts and charter schools have indicated via a survey sent out on October 13, 2021 (follow-up sent October 27, 2021), that they plan on spending approximately \$19.8 million (return approximately \$230,000).
- As of December 13, 2021, the State Department of Education has currently distributed over \$8 million in reimbursement requests. As of December 30, 2021, \$14.74 million in disbursement requests are pending.
- Many districts and charter schools have not yet submitted reimbursement requests for these funds between their initial availability in mid-summer and the current reporting date. However, they are expected to submit their reimbursement requests in time to meet the 90-day liquidation period after the December performance period deadline for these funds (as is standard for Federal grants).
- Reimbursement requests lag actual expenditures, and there were constraints on the use of these funds including: limited time to plan for an implement interventions, challenges with staffing, and the availability of other sources of funding to support interventions during this period.
- Even with the limitations in measuring implementation over this period, districts and charter schools still reported supporting thousands of Idaho students using these funds.
- The most frequent use of K-4 funds was for general content remediation for ELA/Literacy. Districts and charter schools reported serving over 40,000 students with this type of intervention.
- For the K-12 funds, the largest number of students were supported in general content remediation for ELA/Literacy, which reached over 25,000 students during the summer.
- Data from the December Idaho Reading Indicator (IRI) indicate that the percentage of students reading at grade level rose 11 points. Although, it should be noted that when

we compare September 2021 with December 2021 results, the two results come from different student cohorts.

- Data from the December ELA/L and mathematics ISAT interim testing indicate that, overall, 24.5% of students tested in ELA/L and 33.0% of students tested in math are Level 2 (At/Near Proficiency). Aggregate level data allows identification of where those students need more opportunities to learn. Continued practice with specific ELA/L and math skills represents an excellent opportunity for those students to reach Level 3 (Proficiency) during spring 2022 summative testing.
- With approval from the Governor's Office, some districts and charter schools used a different measure of student progress. See table on page 13 of this report for a summary.

BACKGROUND

The Sixty-sixth Idaho Legislature [appropriated](#) \$20 million from the Federal COVID-19 Relief Fund to address learning loss associated with COVID-19. Of this total, the Legislature appropriated \$15 million for K-4 programs and \$5 million for K-12 programs. A portion of these funds were made available for Fiscal Year 2021 to support immediate implementation, with the full amount re-appropriated for Fiscal Year 2022 to continue any interventions.

The intent language in House Bill 356 specified that the K-4 funds were to be distributed based on the number of students at the lowest performance level on the most recent Idaho Reading Indicator (IRI). For the K-12 funds, House Bill 356 tasked the State Department of Education with developing a distribution formula based on assessment scores when possible. Consistent with this guidance, the Department used the distribution formulas below.

K-4 Funding Formula

The K-4 funding was based on the number of students in kindergarten through third grade who scored Below Grade Level on an April 2021 IRI administration. For districts and charter schools unable to assess in the April time period, the Department incorporated data from January through March 2021. The minimum distribution was \$6,000.

K-12 Funding Formula

The K-12 funding was allocated using a combination of FY 2021 mid-term Average Daily Attendance (ADA) and academic performance. The base distribution was as follows:

- Mid-term ADA < 25 = \$3,250
- Mid-term ADA between 25-100 = \$130 per ADA
- Mid-term ADA > 100 = \$13,000

The funding remaining after the base distribution was allocated based on an academic need value. The Department calculated this value based on percentage of kindergarten through third grade students who scored Below Grade Level on the April IRI (incorporating January-March, if needed) and the percentage of students in grades six through twelve identified as At Risk in the March data districts and charter schools submitted via the Idaho System for Educational Excellence (ISEE).

Participation

The Department shared information about the learning loss funds during the spring and early summer, before inviting interested districts and charter schools to apply. Districts and charter schools could apply for the K-4 funding, the K-12 funding, or both. Nearly two-thirds of districts and charter schools participated. The table below summarizes participation by funding category.

Participation Type	Number of Districts and Charter Schools
K-4 Only	8
K-12 Only	17
Both K-4 and K-12	61

Reporting Requirements

House Bill 356 also provided the Department with responsibility on reporting to the State Board of Education and the Joint Finance Appropriation Committee on the use and effectiveness of the learning loss funds and associated programs. The first report was due no later than September 15, 2021, and the second is due by December 31, 2021.

In applying for the funds, districts and charter schools agreed to several requirements necessary for the Department to meet this reporting obligation. Those receiving the K-4 funds were to administer the fall IRI by September 10, 2021 to students supported over the summer using the learning loss funds to track progress towards reading at grade level by the end of the calendar year. Those receiving the K-12 funds had the same fall IRI requirement and were also originally asked to administer an Idaho Standards Achievement Test (ISAT) interim comprehensive assessment (ICA) or shortened interim comprehensive assessment (SICA) to supported students. However, due to the challenges with implementing this metric at the opening of the school year, the ISAT interim component has been deferred until later in the year. Additionally, some districts and charter schools were allowed to use locally-selected assessments, such as NWEA MAP and STAR assessments, to generate assessment data and identify areas where more opportunities to learn would be beneficial for growth.

In addition to using assessment data to measure progress for students supported during the summer, and fall of the 2021-2022 school year, the Department developed a reporting form for districts and charter schools to share the number of students successfully served over the summer by each of the following types of programs using the K-4 or K-12 funds:

- Summer reading/early literacy program
- General content remediation for ELA/Literacy
- General content remediation for Math
- Intervention for students at risk of not being promoted to the next grade
- Credit recovery
- Absenteeism

Districts and charter schools could also provide information about any other programs or local assessments and were told to provide a brief narrative description of their activities using the learning loss funds during the summer.

The following sections of this report summarize the current fund usage based on reimbursement requests along with the information available via the reporting form and IRI results.

REIMBURSEMENTS

K-4 Reimbursement Summary	Reimbursement Data
Number of Districts/Charter Schools Submitting Reimbursement Requests	66
Reimbursed Expense by Purpose...	
Capital Objects	\$32,830.75
Professional Development	\$117,129.09
Purchased Services (not including Professional Development)	\$755,385.93
Salaries/Benefits	\$3,078,425.80
Supplies/Materials	\$2,896,486.15
Travel for Students/Transportation	\$42,542.44
Total	\$6,922,800.16

Districts and charter schools may have expended funds that they have not yet submitted for reimbursement, which would not be included in this table.

K-12 Reimbursement Summary	Reimbursement Data
Number of Districts/Charter Schools Submitting Reimbursement Requests	78
Reimbursed Expense by Purpose...	
Capital Objects	\$14,620.16
Professional Development	\$3,750.00
Purchased Services (not including Professional Development)	\$397,137.67
Salaries/Benefits	\$1,483,598.44
Supplies/Materials	\$942,854.32
Travel for Students/Transportation	\$107,904.64
Total	\$2,949,865.23

Districts and charter schools may have expended funds that they have not yet submitted for reimbursement, which would not be included in this table.

PROGRAM SUMMARY

K-4 Program Summary	Number of Students Successfully Supported
Summer/reading early literacy	7,307
General content remediation for ELA/Literacy	43,082
General content remediation for Math	24,633
Intervention for Students at risk of not being promoted to the next grade	4,405
Credit recovery	86
Absenteeism	494

K-12 Program Summary	Number of Students Successfully Supported
Summer/reading early literacy	987
General content remediation for ELA/Literacy	25,239
General content remediation for Math	20,967
Intervention for Students at risk of not being promoted to the next grade	2,353
Credit recovery	3,606
Absenteeism	14,002

The narratives submitted by each district and charter school during this reporting period are included in Appendix A.

ASSESSMENT SUMMARY

All K-3 students have to participate in the Idaho Reading Indicator (IRI) at the start of the school year in either August or September. The Department asked districts and charter schools to assess students supported by the K-4 learning loss funds between September 1 to 10th, and December 1 to 10th, to facilitate the required reporting.

Overall reading scores are reported in one of three tiers:

- **Tier 1 (At Grade Level):** The student has the foundational reading skills appropriate for their grade level. This student can access and utilize regular grade level content and instruction. The student should be monitored to ensure adequate progress is sustained.
- **Tier 2 (Near/Below Grade Level):** The student has some foundational reading skills appropriate for their grade level. This student requires strategic support in specific skills. The student should be regularly monitored and interventions should be provided to ensure the student makes adequate progress.
- **Tier 3 (Well Below Grade Level):** The student lacks the foundational reading skills appropriate for their grade level. This student requires targeted support in multiple skills. The student should be routinely monitored and interventions should be provided with increased intensity and duration to ensure the student makes adequate progress.

The table below summarizes the number and percent of students in each of the tiers when testing was completed in September and December.

Tiers	September 2021		December 2021	
	#	%	#	%
Tier 1	24,048	51.2%	30,792	62.2%
Tier 2	11,504	24.5%	10,097	20.4%
Tier 3	11,402	34.3%	8,639	17.4%
Totals	46,954	100.0%	49,528	100.0%

Preliminary results are promising. Overall, for the districts and charters that accepted K-4 learning loss funds, the percentage of students reading at grade level rose 11 points. As we review the results, there are a few key considerations to keep in mind. Although we compared September 2021 with December 2021 results, the two results come from different student cohorts. The fall 2021 to spring 2022 comparison for students will be critical to help understand actual growth and end-of-year reading proficiency among the 2021 cohort of K-3 students.

Those receiving the K-12 funds were asked to administer an English Language Arts/Literacy (ELA/L) and mathematics Idaho Standards Achievement Test (ISAT) interim comprehensive assessment (ICA) or shortened interim comprehensive assessment (SICA) to supported students. However, due to the challenges with implementing this metric at the opening of the school year, the ISAT interim component was deferred until later in the year. Additionally, as some districts and charter schools are already using locally-selected assessments, such as NWEA MAP and STAR assessments, the Department will incorporate usage data from these tests in lieu of the recommended ICAs or SICAs.

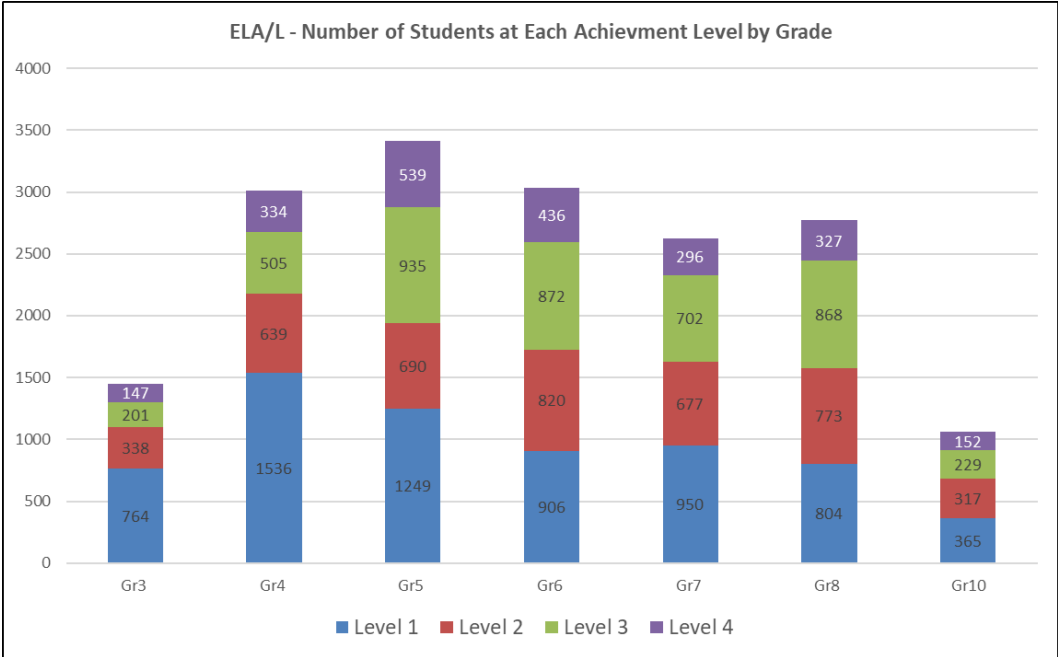
Overall proficiency scores are reported in one of four achievement levels:

- **Level 1:** The student **has not met** the achievement standard and needs substantial improvement to demonstrate the knowledge and skills in English language arts/literacy or mathematics needed for likely success in future coursework.
- **Level 2:** The student **has nearly met** the achievement standard and may require further development to demonstrate the knowledge and skills in English language arts/literacy or mathematics needed for likely success in future coursework.
- **Level 3:** The student **has met** the achievement standard and demonstrates progress toward mastery of the knowledge and skills in English language arts/literacy or mathematics needed for likely success in future coursework.
- **Level 4:** The student **has exceeded** the achievement standard and demonstrates advanced progress toward mastery of the knowledge and skills in English language arts/literacy or mathematics needed for likely success in future coursework.

The table below summarizes the overall number and percent of students supported by the K-12 funds - and were administered the ISAT ICA or SICA in December 2021 - in each of the achievement levels for English Language Arts/Literacy (ELA/L).

English Language Arts/ Literacy		
Achievement Levels	December 2021	
	#	%
Level 1	6,574	37.8%
Level 2	4,254	24.5%
Level 3	4,312	24.8%
Level 4	2,231	12.8%
Totals	17,371	

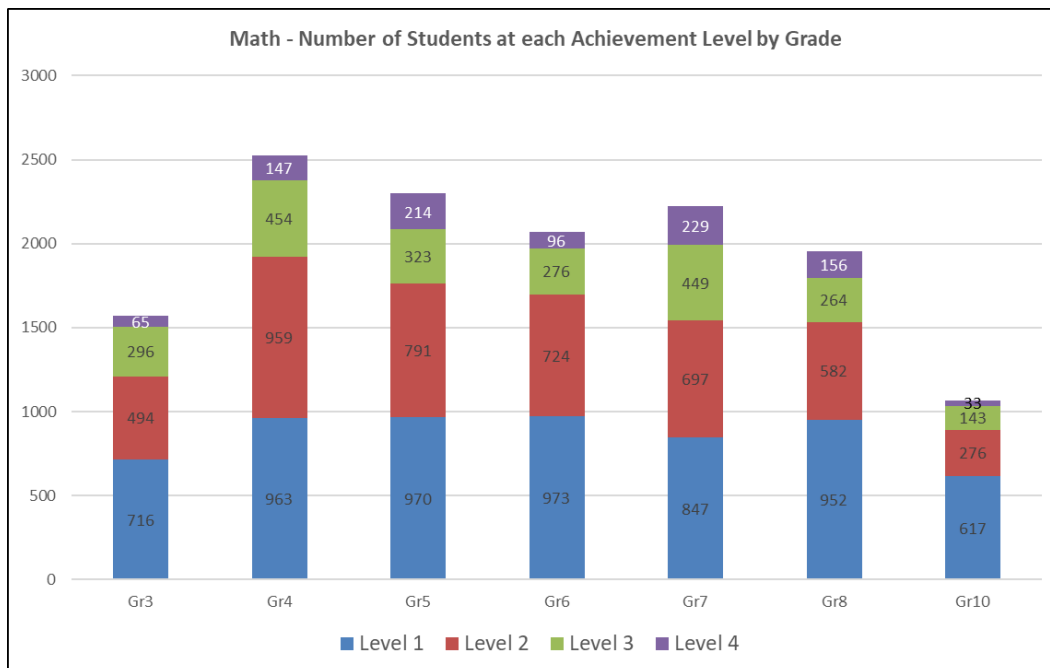
The graph below offers the number students supported by the K-12 funds - and were administered the ISAT ICA or SICA in December 2021 - in each of the achievement levels for English Language Arts/Literacy (ELA/L) by grade (3-8 and 10).



The table below summarizes the overall number and percent of students supported by the funds - and were administered the ISAT ICA or SICA in December 2021 - in each of the achievement levels for the mathematics.

Mathematics		
Achievement Levels	December 2021	
	#	%
Level 1	6,038	44.1%
Level 2	4,523	33.0%
Level 3	2,205	16.1%
Level 4	940	6.9%
Totals	13,706	

The graph below offers the number students supported by the K-12 funds - and were administered the ISAT ICA or SICA in December 2021 - in each of the achievement levels for mathematics by grade (3-8 and 10).



The table below summarizes the type of locally-selected assessments and the number of districts and charter schools that used them to complete the December testing requirement.

Locally-Selected Assessment	Number of Districts and Charter Schools
i-Ready	7
CBM Fluency Measures	1
iStation	12
NWEA MAP	7
AIMSweb	3
STAR	13

Data from the December ELA/L and mathematics ISAT ICA and SICA testing indicate that, overall, 24.5% of students tested in ELA/L and 33.0% of students tested in math are Level 2 (At/Near Proficiency). Aggregate level data allows identification of where those students need more opportunities to learn. Continued practice with specific ELA/L and math skills represents an excellent opportunity for those students to reach Level 3 (Proficiency) during spring 2022 summative testing.

APPENDIX A

Districts and charter schools were asked to provide a brief narrative description of their use of the K-4 and K-12 learning loss funds. Responses are for the districts and charter schools that responded by the December 13, 2021 deadline. The Department consolidated responses for districts and charter schools that submitted multiple responses with slight edits for readability.

ABERDEEN DISTRICT	July salaries and benefits for summer reading program administrator
	December salaries and benefits for learning loss teachers and aide to help students in afterschool program that have been affected academically due to the Covid-19 pandemic. Purchased services for Silverback Learning Solutions milepost subscription for teachers to track student assessments and interventions to help prepare and plan for the needs of individual student's academic needs, and to help with the learning loss of students due to the covid-19 pandemic.
	A portion of the July salaries and benefits for bus drivers for the summer reading program to help students academically that fell behind due to the Covid-19 pandemic.
	November salaries and benefits for after school learning loss teachers.
	October salaries and benefits for aides and program administrator to teach students 1st through 4th grade in Harvest Boot Camp classes. Harvest Boot Camp classes were provided to help students with academic learning loss due to the impact of Covid-19.
	June summer school salaries and benefits for the summer reading program teachers and aides, two hours a day for 16 days grades kindergarten through fourth grade.
AMERICAN FALLS JOINT DISTRICT	September - November 2021 salary and benefits for paraprofessional staff working with students during our Friday Intervention school day.
	July 2021 summer school salary and benefits for 12 certified teachers and 6 paraprofessionals for K-4 grades.
BASIN SCHOOL DISTRICT	Nov payroll: .29 FTE for additional 3rd grade teacher & additional hours for a literacy para
	Sept/Oct Payroll for an additional 3rd grade teacher (1 FTE) to provide extra instruction for learning loss.
	Sept Payroll for August jump start summer school for learning loss: 1 teacher/1 para Purchase Services: Istation Subscription
	July Payroll for Summer School Covid Learning Loss: 1 teacher/4 Paras/3 student helpers

BEAR LAKE COUNTY DISTRICT	Salaries and Benefits for Certified and Classified staff instructing students outside of regular school hours. - Learning Loss. Supplies. Supplies include after school snacks and Reading Mastery Curriculum.
	Salaries and Benefits for Certified staff instructing students outside of regular school hours. - Learning Loss. Supplies including Reading Mastery & after school treats.
BLACKFOOT DISTRICT	Summer Jump Start program for our K-4th schools. Staffing, transportation, and class supplies for a two-week summer school right before the start of the school year. Students were identified by academic need and invited to participate in the Jump Start program. Transportation costs were district wide due to a need to bring students to and from school in order to ensure program participation.
BOISE INDEPENDENT DISTRICT	Please note: We purchased curriculum to assist with learning losses. The professional development charges were incurred for new and innovative ways to train staff to support their students and learning losses. These expenses were necessary to address the concerns with the learning losses. These expenses were not accounted for in the budget and were incurred between 3/1/2020-
BUHL JOINT DISTRICT	November Salary and Benefits for 8.0 FTE Classroom Teachers, 3.0 FTE Classroom Teacher Aides, for after school tutoring for Governors K-4 Learning Loss,
	July Salary and Benefits for 9.0 FTE Summer School Classroom Teachers, 4.0 FTE Summer School Classroom Teacher Aides, Summer School Transportation to and From Home, I Station Complete Learning Loss Program for K-4
	June Salary and Benefits for 6.0 FTE Classroom Teachers and 1.0 FTE Classroom Teacher Aide, Summer School Classroom Supplies for Summer School K-4 Learning Loss
CALDWELL DISTRICT	Salaries and Benefits for Summer Bridge Academy grades K-2, held in June, wages paid in July, accrued via a journal entry back to June.
CAMAS COUNTY DISTRICT	Salary and benefits for the summer reading program. Wonders reading curriculum grades K-4.
CASSIA COUNTY JOINT DISTRICT	K-4 summer school supplies for district wide science, math, and literacy programs at all elementary schools. Salaries and benefits for teachers, aides, and child nutrition workers who worked with students during summer learning loss programs.
CASTLEFORD DISTRICT	Salary/benefits for after school tutoring for September-October. Additional curriculum needed for the tutoring.
	1st-3rd curriculum guides for after school tutoring.

COEUR D'ALENE DISTRICT	Salaries for new program Imagine Bus reading buses for K-4 students. Giveaway books for summer reading k-4
COTTONWOOD JOINT DISTRICT	Learning Loss teacher and aide for K-4 Students
	Salaries, Benefits & Supplies for students for learning loss.
	Salaries and benefits for 1 teacher and 4 paraprofessionals during summer school. Students who fell behind during the on-line schooling are in attendance for 6 weeks, Tuesday and Thursday mornings.
EMMETT INDEPENDENT DISTRICT	Salaries/Benefits: Elementary Summer program session 1, instructors/aides; Supplies: Elementary summer program supplies, science project supplies;
FALCON RIDGE PUBLIC CHARTER SCHOOL, INC.	Salaries and Benefits for in school and after school tutors, supplies for Reading Club, Microsoft Licenses for the Chromebooks,
FREMONT COUNTY JOINT DISTRICT	Idaho Future K-4 Learning Loss (286/PRI 326)
	Purchased Services -to pay Edmentum for Reading Eggs Licenses at Teton Elem Pay Curriculum Associates for I-Ready Classroom subscription and professional development.
	Building Idaho Future K-4 Learning Loss (286/PRI 326) Purchased Services to pay Edmentum for Reading Eggs Licenses at HFE.

<p>GARDEN VALLEY DISTRICT</p>	<p>Garden Valley School District requests reimbursement for the following expenses incurred in November 2021.</p> <p>Salaries and Benefits One Full Time Learning Loss Para, providing services during the regular school day. Two teachers and one staff provide additional after school learning in ELA, Math, and Art.</p> <p>Supplies and Materials The total includes the remaining cost of Read Naturally benefiting students in 3rd grade and at the Lowman School. Learning A-Z online program provides spelling and vocabulary learning opportunities for elementary students in Garden Valley and Lowman. Students use this program in the building and at home. Science online program to use for 7 classrooms. Program provides online science curriculum, intervention, and enrichment to five grades in Garden Valley and nine students in the Lowman Elementary school house. This program allows for student use in the building and at home. This expense is a portion of the total.</p> <p>The Garden Valley School District requests reimbursement for the following expenditures under the k-4 Learning Loss Dollars: One Learning Loss Para Professional has been hired to focus solely on learning loss due to Covid 19. The salary field reflects the salary and hours throughout the months of September and October. Online classes to facilitate virtual learning for students learning off site is requested in the Purchased Services. In addition, an online learning program was also purchased for our kindergarten class. This program can be used on or off site as enrichment or intervention. An additional resource has been purchased for our third-grade teacher and students. This resource focuses on online reading intervention (\$150.00). The 3rd grade teacher and the Lowman teacher have purchased Read Naturally for their classrooms. This purchase is to use in the classroom, tutoring, and Part Friday's as an intervention.</p>
<p>GEM PREP: MERIDIAN, LLC</p>	<p>Supplies & Materials - Reading Mastery curriculum purchased to aide in intervention</p>
<p>GEM PREP: NAMPA, LLC</p>	<p>Supplies/Materials - Curriculum purchased to aide in intervention</p>
<p>GEM PREP: ONLINE LLC</p>	<p>Supplies/Materials - Curriculum to aide in intervention</p>
<p>GEM PREP: POCATELLO, LLC</p>	<p>Supplies/Materials - purchase of curriculum, Reading Mastery, to aid in intervention</p>
<p>GEM PREP: ONLINE LLC</p>	<p>Supplies/Materials - Reading Mastery curriculum purchased to aid in intervention assistance</p>
<p>GEM PREP: POCATELLO, LLC</p>	<p>Supplies/Materials - Reading Mastery curriculum purchased to aid in intervention assistance</p>

GENESEE JOINT DISTRICT	Due to COVID - 19 and all the complications with providing intensive instruction to students who experienced learning loss from less than adequate instruction at the end of the 2019/20 school year we offered a summer school program for the summer of 2021. We do not typically run a summer school program, but we decided after looking at the data that we had numerous students who did not make up the gains we had hoped for during the 2020/21 school year. We then prioritized students based on their summative and formative assessments to participate and offered 6 weeks of summer school led by certificated teachers for a period of 6 weeks. The Governor's learning loss funds were utilized to support instruction, pay for staff and services through IDLA.
GOODING JOINT DISTRICT	Summer school Salaries and benefits. 2.5 FTE certified. 3.5 FTE classified. Summer school transportation - 16 days. Grade level supplies - books, flash cards, intervention materials. Reading and math curriculum
HAGERMAN JOINT DISTRICT	summer school salaries and benefits & remediation curriculum
HANSEN DISTRICT	<p>SALARIES/BENEFITS: We have a part time para coming in to work one-on-one with students that may be behind.</p> <p>SOFTWARE: Istation to help keep track of students learning progress</p> <p>SUPPLIES: Software to help boost kids where they are deficient.</p> <p>SUPPLIES: A supplemental software to help kids with their reading.</p> <p>SALARIES/BENEFITS: We have a part time para coming in to work one-on-one with students that may be behind.</p> <p>SUPPLIES: A supplemental software to help with math for students that are behind.</p>
HERITAGE ACADEMY, INC.	<p>Salary for 1 FTE certified staff for 2 months. Certified Staff spent 2 months during the summer Tutoring individual students to address significant learning loss due to COVID. Benefits for FTE (PERSI, FICA, Medical)</p> <p>One .18 FTE certified salary. Staff spend time working with elementary/secondary/fed programs teams to develop specific TER II and TER III intervention approaches to address specific learning loss identified by superintendent and leadership team. Benefits for FTE (PERSI, FICA, Medical)</p>

HORSESHOE BEND SCHOOL DISTRICT	(1) Classified Staff Salary/Benefits for summer school classes. Addressing learning loss with summer program. Technology used to enhance current reading instruction to address learning loss.
	(1) Classified Staff Salary/Benefits for summer school classes. Addressing learning loss with summer program. Curriculum for online learning due to COVID. Wit & Wisdom reading program used to address learning loss during the summer and to supplement current reading instruction during the school year.
	1 Classified Staff Salary/Benefits for Summer School Classes. Addressing learning loss with summer program. Online learning resources to address learning loss. Curriculum to address learning loss due to COVID 19.
	4 Classified Staff Salary/Benefits for Summer School Classes for K-4.
	2 Classified Staff Salary/Benefits for summer school classes for K-4, Supplemental reading material to address learning loss
IDAHO SCIENCE AND TECHNOLOGY CHARTER SCHOOL, INC.	Salaries and benefits 0.2 FTE teacher's assistance and intervention with students and learning loss. Supplies- summer reading program, reading intervention programs.
IDAHO VIRTUAL ACADEMY, INC.	These are expenditures from the Fall K4 Learning Loss portion of this grant (K4 summer learning loss expenditures were submitted separately.) The Danielson training is for an instructional coach who is working with K4 teachers on delivering virtual instruction in an engaging and effective manner aligned with the Danielson rubric which is essential to helping students recover from learning loss. 2. Thomas Murray provided PD around making student learning experiences personal and authentic through developing relationships with students and understanding them as individuals. It is well-known that the pandemic has caused stress and insecurity in addition to lost opportunities to learn. The stress and insecurity is still there. Our teachers need to know and understand their students, and students need to know and trust their teachers for learning to take place. Now more than ever, this PD is relevant to helping teachers help kids recover from learning loss. 3. iPad expense has been removed.
	November salary and benefits for 4 certified FTE and 3 classified FTE working on K4 literacy learning loss.
JEROME JOINT DISTRICT	July Portion of K-4 Summer School Transportation, K-4 Reading & Math Intervention Software Licensing.

JOINT SCHOOL DISTRICT NO. 2	Other is payment for summer tuition for students who were doing credit recovery Supplies include 6 months of Iready license and textbook option of my perspectives
	salaries associated with special education supports for students associated with learning loss
KIMBERLY DISTRICT	Purchase of Reading Wonders curriculum. This curriculum is aligned, researched based curriculum which will address deficiencies at grades K-4.
KUNA JOINT DISTRICT	Supplemental Math Curriculum (books and digital) to boost interventions and address learning loss for K-4. Portion of the expenses for AVID Curr to address learning loss Salary and benefits for supplemental interventionists for 5 elementary schools. We only claim salaries and benefits from 9/1/2021 to 11/30/2021. The AVID costs are supplemental (in addition to what was budgeted) because of this grant. We increased the cost and purchased more supplies and services because we knew we were receiving this grant. Thank you
	Summer school stipends and additional curriculum for Elementary schools The district used these funds to boost the credit/learning recovery program for students grades 5-12 during the summer of 2021, as described in the grant application
	Summer school supplies The funds were used to boost the summer school program for K-4 students. \$46,704 includes summer stipends and benefits for the summer school teachers as described in the grant application. This includes behavioral support, social workers, literacy instruction, admin support, and other necessary expenses to run the program.
LAPWAI DISTRICT	Salaries and Benefits to address learning loss due to the COVID-19 pandemic.
	Salaries and Benefits and supplies to address learning loss due to the COVID-19 pandemic. Supplies related to learning loss include: curriculum and digital curriculum from Literacy Resources,
	Salaries and Benefits for Summer School to address learning loss.
	Salaries and Benefits for 8 Certified and 8 Classified personnel to address K-4 learning loss with additional summer school in June.

LEWISTON INDEPENDENT DISTRICT	Salaries/Benefits: 4 Leads for elementary schools, focused on coaching the PLC process to address learning loss and 2 instructional assistants in elementary schools focused on literacy. Supplies/Materials: Printed Materials for K-3 teachers and literacy instructional assistants. Supplies/Materials: K-4 Phonemic Awareness Curriculum and Bridge the Gap Heggerty Intervention Lessons.
	Salaries/Benefits: 7 Leads for elementary schools, focused on coaching the PLC process to address learning loss and 8 instructional assistants in elementary schools focused on literacy. Supplies/Materials: Materials (Decodable Reader Sets Grade2) for K-3 teachers and literacy instructional assistants.
	Salaries/Benefits: 7 Leads for elementary schools, focused on coaching the PLC process to address learning loss and 6 instructional assistants in elementary schools focused on literacy. Supplies/Materials: Materials for K-3 teachers and literacy instructional assistants. Supplies/Materials: Materials for K-3 teachers and literacy instructional assistants, including ECRI cards, Leadership Guide books, Decodable Reader Sets, and Foundational Skills Enhancement books aligns with the grant application for "Initial and ongoing training of ECRI for all K-3 teachers and literacy instructional assistants. ECRI materials for all K-3 teachers and literacy instructional assistants.".
MACKAY JOINT DISTRICT	Salaries & benefits for 1 summer school teacher
MADISON DISTRICT	Accelerate Education online courses that helps mitigate learning loss in grades K-3. This program was not included in the budget prior to March 2020.
	Phonics Core program that helps mitigate learning loss in grades K-3. This program was not included in the budget prior to March 2020.
MARSH VALLEY JOINT DISTRICT	Salaries for a teacher during the summer stem program.
	Salaries for teachers and aides for summer learning program. Supplies for summer learning program
	Teachers and aides salaries for summer learning program

MARSING JOINT DISTRICT	Salaries/benefits for intervention, tutoring
	Outdoor Learning Classroom Project (base) Classroom grade-level reading material to address learning loss. Mobile Library Project to address learning loss outside school hours The grant application indicates that the learning loss money was going to be utilized on summer school and No Red Ink. Please describe Outdoor Learning Classroom Project - it's relationship to K-4 reading/math and learning loss. Outdoor Learning Classroom Project (base) Classroom grade-level reading material to address learning loss. Mobile Library Project to address learning loss outside school hours
	Salaries/benefits K-4 tutoring and intervention
MIDVALE DISTRICT	Salaries & Benefits: 2.0 Certified Teachers summer school K-4; 1.0 Classified Para summer school Supplies: IMSE K-2 Slide Bundle; Math workbooks K-2; Singapore Math texts & workbooks
	Summer School supply - mobile & stationary podiums/cleaning wipes
MOUNTAIN VIEW SCHOOL DISTRICT	Personnel costs for various intervention / remediation / summer school / jumpstart programs across the district. Personnel costs for various intervention / remediation / summer school / jumpstart programs across the district.
	Personnel salary & trailing benefits: Summer school Instruction time at GEMS & Elk City schools. Supplies: Dreambox Learning subscription GEMS.
	Supplies: Software license fees Dreambox subscription for elementary grads
MURTAUGH JOINT DISTRICT	Salaries and benefits providing additional services to address learning loss
	salary/benefits for 1 certified and 1.5 classified serving students to alleviate learning loss
NAMPA SCHOOL DISTRICT	Stipends for the book selection committee. Supplies and materials for learning loss Educational Books.
	MAP Growth from NWEA is a computer adaptive assessment—meaning that the difficulty of questions adjusts throughout the assessment based on the student’s responses. MAP Growth assessments provide a scaled score referred to as the RIT score, which is a measurement that quantifies a student's academic performance. The RIT score allows educators to initially identify students’ achievement in a given subject area. Since the RIT scale is grade-independent, educators can track a student's growth over time.
	Summer School non-budgeted salary and benefits.
	Summer School no budgeted salary and benefits.

NEZPERCE JOINT DISTRICT	Salary and benefits for .16 para-pro
	Salary & benefits for .16 fte para-pro and para-pro for summer school
	Salary & benefits for summer school and reading curriculum
NORTH GEM DISTRICT	Expenses from September 1, 2021 to September 30, 2021 for supplies for K-4 Learning Loss. items include Scholastic Readers and Elementary Reading Incentives.
	Expenses from August 1, 2021 to August 31, 2021 for supplies for K-4 Learning Loss. Items include reading incentives, kindergarten writing materials, and licensing for supplemental reading support program for students.
	Expenses from June 1, 2021 to June 30, 2021 for supplies for K-4 Learning Loss, Summer reading program
NORTH IDAHO STEM CHARTER ACADEMY, INC.	Remediation coordination, summer classes and monitoring, online curriculum, assessments
NORTH STAR CHARTER SCHOOL, INC.	Learning Loss application for reimbursement
OROFINO JOINT DISTRICT	Supplies and materials from summer reading program, Chromebook for grade 4, and Math Intervention curriculum for learning loss.
	Supplies and materials for summer school, Read Naturally online reading intervention, Benchmark Advance package and books.
	Stipends for 8 paras and teachers, snacks, bus transportation, gift cards
	Bookmark prizes, books, activities, gift card prizes, snacks, program materials, Benchmark Advance 2 Gr. 4
PARMA DISTRICT	Salaries and benefits covered Elementary "Summer Champs" Summer School staff, PLC Bridge The Gap Summer School staff salaries, as well as a portion of elementary custodians for their extra cleaning and working around summer school. Purchased Services included IStation Math, Accelerated Reader, STAR Math and Reading and MyON subscription for Elementary. These purchased services will help in testing of our students, tracking their progress and keeping them on track with their grade level. Supplies and materials purchased were toner, Olympic flags game, jumbo dice, snacks, summer bridge workbooks, and postcards, as well as an economy charging cart for Chromebooks that summer school utilized. Professional Development was for Literacy with our Elementary Staff through Education Northwest.

PAYETTE JOINT DISTRICT	Sept/Oct salary and benefits for .3 FTE kindergarten teacher Supplies - Apple iPad covers for kindergarten class (iPads backordered), Heggerty Literacy Curriculum, Westside EL student headphones
	Salaries and benefits for 6 certified teachers and 6 paraprofessionals for Payette Primary summer school
PRESTON JOINT DISTRICT	Returned for corrections at the request of Bran Nielsen.
	Funds were utilized for salaries and benefits paid to staff in support of summer school programs.
SHELLEY JOINT DISTRICT	Salaries for after school program; benefits for after school program Curriculum to address learning loss; bussing for afterschool program.
	Salary; benefits; iPads, cases, curriculum for October 2021.
	Software ~ licenses, supplies, curriculum, snacks for after school programs for September 2021.
	Salaries and benefits for teachers, aides, and food service staff for summer tutoring program; bus service for summer tutoring program; food for summer tutoring program for August 2021.
	Meals and Supplies for summer tutoring program for July 2021.
SODA SPRINGS JOINT DISTRICT	Purchased Leader in Me a process designed to address social emotional needs, college and career readiness, and the development of a strong educational and student leadership culture. School wide program for students and teachers in a K-4 setting
	3.5 FTE RTI Para-Professionals 2 bus drivers, and 1 FTE full time teacher salaries and benefits to provide Building Idaho Future K-4 Learning Loss.
	Purchased Renaissance Learning program MYON Reading Program Think Central as well as I-station to provide curriculum for Building Idaho Future K-4 Learning Loss
SUGAR-SALEM JOINT DISTRICT	The salaries/benefits costs are partial costs for 2 teachers. One teacher is a mentor for other K-4 teachers and helps them use data to improve their teaching skills. The other teacher provides all-day kindergarten for struggling students. These positions are to help fight the learning loss that occurred during the COVID pandemic.
	Summer School Session #2 - This includes salaries and benefits for 1 administrator, 8 teachers, and 7 paraprofessionals.

SWAN VALLEY ELEMENTARY DISTRICT	Salary and Benefits. This salary and benefits is for paraprofessionals in our school during school hours and paying a teacher to run a after school reading program.
	Purchased Renaissance Learning reading program to help with learning loss HMH Reading Curriculum; Phonics program for reading loss, and additional products from Amazon.com to help with learning loss.
	Salary and Benefits for Learning Loss Grant. After school reading program for a teacher and paraprofessional salary for time during the day for reading and math pull outs.
	Salary and Benefits for Summer 2021 Reading Program for students who scored a 2 or 3 on Spring 2021 IRI in the amount of for Kami H. Paraprofessional Reading and math support at Swan Valley School for students who are behind due to COVID issues during 2020-2021 school year.
	Salary and Benefits for Summer 2021 Reading Program for students who scored a 2 or 3 on Spring 2021 IRI.
SYRINGA MOUNTAIN SCHOOL, INC.	Salaries/Benefits-summer reading program with 2 certificated & 1 classified staff Supplies-new math program & manipulatives to increase ISATS scores; reading-literature programs with needed tools to increase IRI scores
	Math program/manipulatives to increase ISAT scores and reading-literature program/tools to increase IRI scores
TAYLOR'S CROSSING PUBLIC CHARTER SCHOOL, INC.	Salaries and Benefits for October for K-4 learning loss.
	PT teacher salary/benefits - Reading Specialist
THE POCATELLO COMMUNITY CHARTER SCHOOL, INC.	PCCS is running a four-day summer school for 6 weeks to help students with learning loss. The salary and benefits are for 3 certified personnel, educational assistants, custodial and office/administrative staff for the month of July.
	We have started a summer school program for students to support and help with learning loss. The costs cover 3 certified personnel and 10 classified personnel, as well as various expenses to operate the program. I am attaching invoices and check stubs for all expenses.
	PCCS is running a four-day summer school for 6 weeks to help students with learning loss. The salary and benefits are for 3 certified personnel, educational assistants, custodial and office staff. There are misc. supplies used for the program. The program focuses on assisting students with ELA and math as well as enrichment activities to keep students engaged for the all-day program. We utilize a project-based curriculum and therefore incorporate many different hands on projects within the core curriculum. For instance, they are making bird houses as a math project.

<p>THE VILLAGE CHARTER SCHOOL, INC.</p>	<p>Salaries and benefits for GLL paraprofessional focusing on math and reading. Supplies to help with learning loss.</p> <p>Supplies to help with learning loss: ASSESSING READING MULTIPLE MEASURES, DEVELOPING NUMBER KNOWLEDGE, TEACHING NUMBERS IN THE CLASSROOM 4-8 YEAR OLDS, TEACHING READING SOURCEBOOK, LEARNING BY DOING, RTI HANDBOOKS, DEVELOPING FRACTIONS KNOWLEDGE, TEACHING NUMBER: ADVANCING CHILDREN, DEVELOPING NUMBER KNOWLEDGE: 7-11 YEAR OLDS. MANIPULATIVES FROM HAND2MIND.</p> <p>supplies for learning loss in reading and math</p> <p>supplies to support learning loss.</p>
<p>TREASURE VALLEY CLASSICAL ACADEMY, INC.</p>	<p>Treasure Valley Classical Academy expended a portion of these funds on a summer reading program. These expenditures included stipends for 8 of our staff members, salaries for 2 reading pro para professionals and the related benefit costs. Funding was also spent on travel expenses for a staff member to attend training. Expenditures were also incurred on purchasing supplies for the summer reading program.</p>
<p>TWIN FALLS DISTRICT</p>	<p>math 180, Read 180, Achieve 3000</p>
<p>VISION CHARTER SCHOOL, INC.</p>	<p>Salaries for summer school staff and support personal for August through October of 2021-2022 school year.</p>
<p>WALLACE DISTRICT</p>	<p>CERTIFIED/CLASSIFIED SALARY/BENEFITS ADDRESSING LEARNING LOSS FOR IDENTIFIED STUDENTS & AFTER SCHOOL TRANSPORTATION</p>
<p>WEISER DISTRICT</p>	<p>Salaries & Benefits: Certified teacher - Reading Interventionist - Elementary School Supplies: Phonemic Awareness Kindergarten, Primary; Bridge the Gap</p>

WENDELL DISTRICT	<p>Salaries and Benefits to provide extra extended day instruction for learning loss. Supplies used to provide new curriculum and materials for the extended day service. Capital Outlay was used to purchase new speakers and microphones from Audio Enhancement to aide in the educational process. Transportation funds were used to provide busing for the extended day program.</p> <p>Funds used to provide extra educational supplies and materials for the extended day program. Capital objects used to purchase audio system (speakers and microphone) for classrooms, which promotes the educational process by increasing on-task behavior, keeping attention, fewer requests for repetition, improved test scores, and increased mobility and accessibility for teachers. Transportation used for the extended day students.</p> <p>Salaries and Benefits for Teachers and Classified staff to provide additional instruction for learning loss. Purchase Services used to purchase software to assist with learning loss</p>
WEST SIDE JOINT DISTRICT	Funds were utilized to pay the salaries and benefits of teachers and paraprofessionals participating in summer reading programs and remedial instruction as well as instructional materials and supplies.
WHITEPINE JOINT SCHOOL DISTRICT	<p>Math, ELA, & Science supplemental curriculum supplies to address learning loss in grades K-4.</p> <p>Supplies: Supplemental math, ela, and writing curriculum sets. 3872.09</p> <p>Purchased Services: Annual subscription to new learning perspectives. 249.75 The annual subscription to New Learning Perspectives is new.</p>
XAVIER CHARTER SCHOOL, INC.	1. Salaries for mentors/tutors for after school homework/tutoring clubs.

<p>BASIN SCHOOL DISTRICT</p>	<p>Nov payroll: .29 FTE for additional 3rd grade teacher & additional hours for a literacy para Sept/Oct Payroll for an additional 3rd grade teacher (1 FTE) to provide extra instruction for learning loss. Sept Payroll for August jump start summer school for learning loss: 1 teacher/1 para Purchase Services: Istation Subscription July Payroll for Summer School Covid Learning Loss: 1 teacher/4 Paras/3 student helpers</p>
<p>BEAR LAKE COUNTY DISTRICT</p>	<p>Salaries and Benefits for Certified and Classified staff instructing students outside of regular school hours. - Learning Loss. Supplies. Supplies include after school snacks and Reading Mastery Curriculum. Salaries and Benefits for Certified staff instructing students outside of regular school hours. - Learning Loss. Supplies including Reading Mastery & after school treats.</p>