

SUPPORTING SCHOOLS AND STUDENTS TO ACHIEVE

SHERRI YBARRA, SUPERINTENDENT OF PUBLIC INSTRUCTION





Idaho ESSA State Plan Standards and Assessment Sub-Committee



Welcome and Introductions

- Thank you for your participation
- Idaho State Department Of Education Staff
 - Dr. Cheryl Finley, Director of Assessment
 - Scott Cook, Director of Academic Services, Support and Professional Development
 - Karlynn Laraway, Special Education Assessments Coordinator
 - Dr. Christina Nava, Director of EL and Migrant
- Regional representatives representing various stakeholder groups including teachers, administrators, parents, advocacy groups
- Please share your name, role/position and why you are interested in this group.



Go To Meeting Overview

For audio, you have two choices:

1. Use computer speakers (default)

2. Use telephone:

Under “Audio” click to use telephone

Then dial the toll-free number and code listed

All audio lines are muted at this time.



The GoToWebinar Attendee View

GoToWebinar Viewer

IDAHO TRAINING Clearinghouse

Webinar Overview

Organizer: Idaho Training Clearinghouse | Presenter: Idaho Training Clearinghouse

Audio: Use your microphone and speakers (VoIP) or call in using your telephone.

Dial: 1 877 309 2071
Access Code: 547-384-969
Audio PIN: 55

Cari Murphy
Director
Idaho Training Clearinghouse

Audio
Telephone
Mic & Speakers
MUTED 000000000

Attendees: 2 out of 101
Attendees (1) Staff (1)
NAMES - ALPHABETICALLY
Cari Murphy (Me)

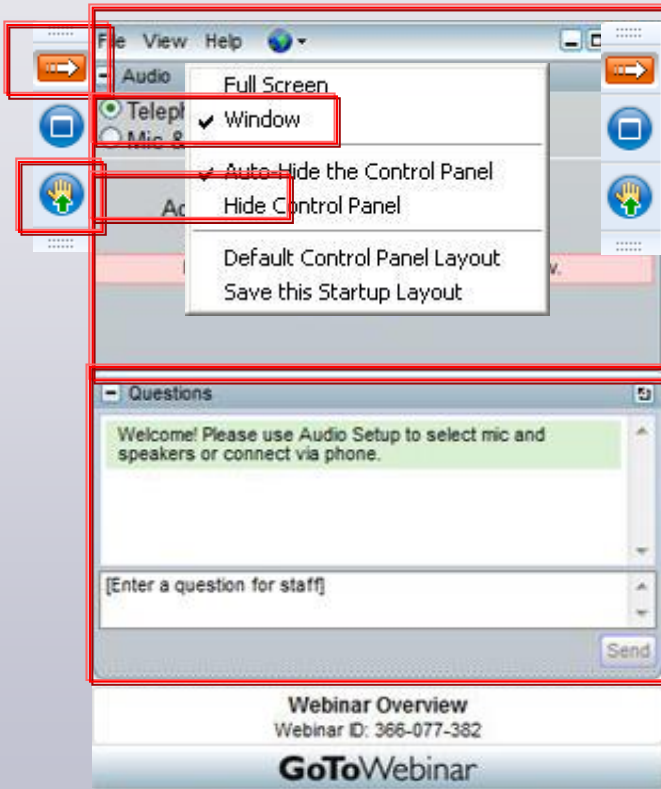
Search

Questions
Welcome! Please use Audio Setup to select mic and speakers or connect via phone.

CITRIX

start 10:29 AM

How to Participate Today



- Open and close your Control Panel
- View, select, and test your audio
- Submit text questions
- Raise your hand (if experience technical or audio issues)
- **NEW** – Handouts pane

ESSA State Plan Timeline

- **December 2015 – ESSA Signed into Law by President Obama**
- **December 2015 – February 2016** – Federal Programs Staff participated in weekly “Getting to Know ESSA” meetings to gain an understanding of the new law.
- **March 2016** – Key Idaho State Department of Education (ISDE) staff identified elements in ESSA and created subcommittee around those major elements.
- **April – November 2016** – Sub-Committees review specific components of ESSA and assist the ISDE in preparing a draft plan for Standards and Assessment area.



ESSA State Plan Timeline

- **June/July 2016** – United States Department of Education (USED) released Proposed Regulations
 - 60 day public comment period that closes in September 2016
- **October – November, 2016** – USED publishes final ESSA regulations.
 - Workgroups and States revise plan as necessary
- **November, 2016 – February, 2017** - share proposed plan with State Board of Education, legislators, and the governor.
- **March , 2017** – Idaho’s Consolidated State Plan is submitted to the Secretary of the United States Department of Education. The Secretary then has 120 days to approve our plan.



Goals and Expectations For Our Committee

Purpose and Goals of the Standards and Assessment Committee

Inform the implementation of the Every Student Succeeds Act (ESSA) by addressing aspects of the law and by making connections to ISDE's strategic plan goals as appropriate in order to create a consolidated state plan that best represents what is good for Idaho's public school children.



SUPPORTING SCHOOLS AND STUDENTS TO ACHIEVE

SHERRI YBARRA, SUPERINTENDENT OF PUBLIC INSTRUCTION

Goals and Expectations For Our Committee

- 1. Act as a key advisor to provide knowledge and expertise in the area of Standards and Assessment.**
- 2. Give advice and help the ISDE team make sense of issues and adapt activities in a variety of contexts.**
- 3. Bring the perspectives of your roles and organizations into our work.**
- 4. Engage with your own network and communities about this work in a constructive manner.**



Goals and Expectations For Our Committee

- 5. Serve as a critical thought partner throughout the interpretation, design and development stages of our work.**
- 6. Share ideas and provide input to create information recommendations for Idaho's plan in this area through a collaborative approach.**
- 7. Update your own constituencies using IDE created documentation.**
- 8. Provide input regarding the drafts so that the ISDE captures the intent of the sub-committee.**



Resources

Documents

- Today's PowerPoint Presentation
- Side by Side Comparison of NCLB and ESSA_CCSSO
- Standards and Assessment Critical Area Outline
- Proposed Idaho 11th-12th Grade College Readiness Transition Framework

Web Links

- Idaho State Department of Education Website: <http://www.sde.idaho.gov>
- Public Comment Site and Idaho Challenge (Math and ELA/Literacy and Public Review); Current standards at bottom of page:
<http://www.sde.idaho.gov/academic/index.html>
- All public comments received during April 2016 negotiated rulemaking:
<http://sde.idaho.gov/topics/admin-rules/index.html>
- US Department of Education: <http://www.ed.gov/essa?src=rn>
- Council of Chief State School Officers (CCSSO) :
http://www.ccsso.org/Resources/Programs/Every_Student_Succeeds_Act.html



Meeting Schedule

August 4, 2016 - Standards / General provisions

August 11, 2016: Participation/Opt Out

August 18, 2016: Standards and Assessments related to Students with Disabilities/English Language Proficiency Standards

August 25, 2016: Assessment grants and innovative assessments

HOMEWORK for the meeting on August 4, 2016

Review the posted documents, focusing on the standards and assessment sections highlighted in yellow

- What are your initial thoughts on the new law?
- What questions do you have?
- How do the components of the law relate to your work?

Review the Idaho Challenge Webpage at

<http://www.sde.idaho.gov/academic/index.html>

- What questions do you have about our standards?





SUPPORTING SCHOOLS AND STUDENTS TO ACHIEVE

SHERRI YBARRA, SUPERINTENDENT OF PUBLIC INSTRUCTION