



2023 Farm to School Census

An Analysis of National and
State-Level Findings in the
2023 Farm to School Census

Idaho



Learning Objectives

- Describe the Census, its scope, and how it was conducted
- Summarize where farm to school is today nationally
- Summarize farm to school efforts in your state
- Prepare you to use Farm to School Census data for your own work

Part I: What is the Census?



What is “farm to school?”

- Serving local foods through school meal programs
- Educating on the value of nutrition and agriculture
- Promoting local foods
- Sourcing and procuring local foods

What is the Farm to School Census?

- Survey of School Food Authorities (SFAs)
- Sent to 18,000+ SFAs running National School Lunch Programs (NSLP)
- Required responses from all SFAs regardless of any farm to school activity

How long has USDA done the Census?

- 2013*
- 2015*
- 2019
- 2023

In 2023, SFAs provided answers based on their work in the *2022-2023 School Year*.

Data Limitations

- Self-reported
- Differences are descriptive
 - Have not been tested for statistical significance
- Possible selection bias
- Use caution when comparing data across years
 - State data unweighted in 2019, but weighted in 2023





Part II: Key National Findings

Farm to School Participation Increased Nationally

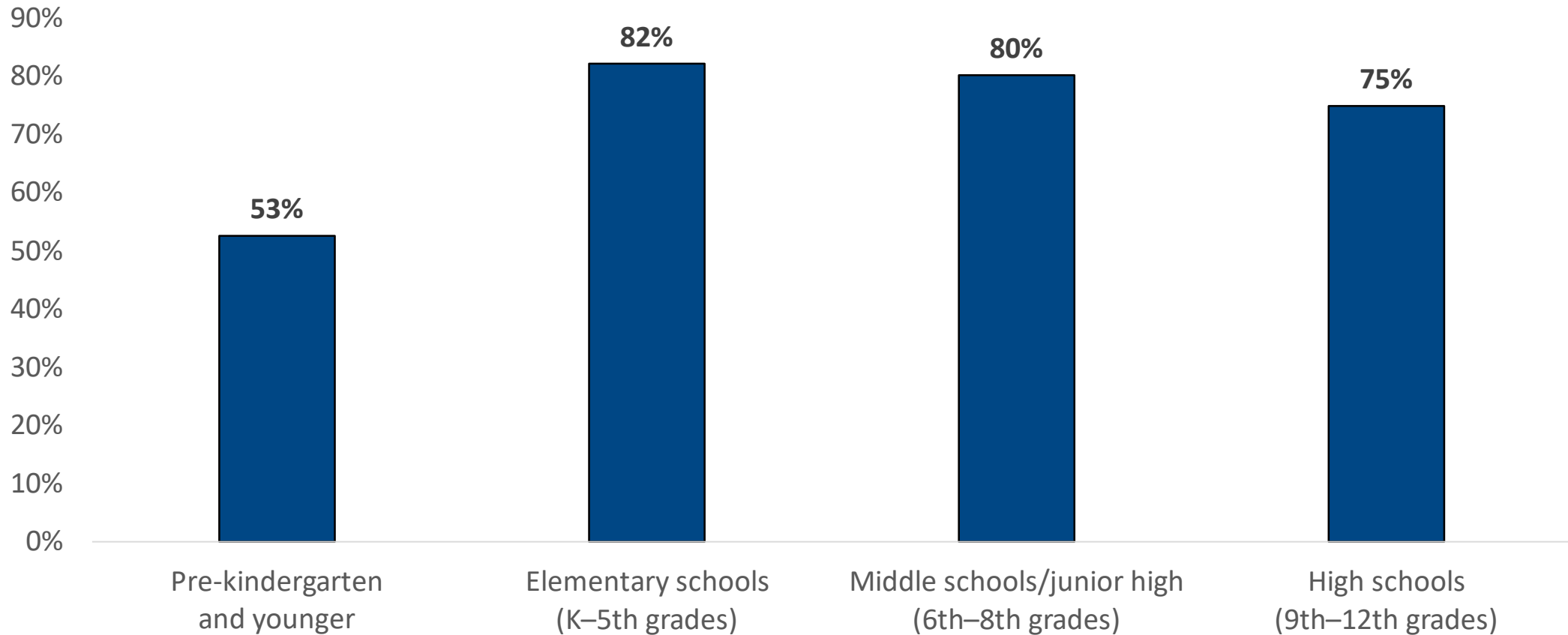
Farm to school participation increased from 2019 to 2023

2019		2023
65%	of SFAs	74%
did at least one farm to school activity		

These SFAs included **86,086** schools and **45,661,333** students

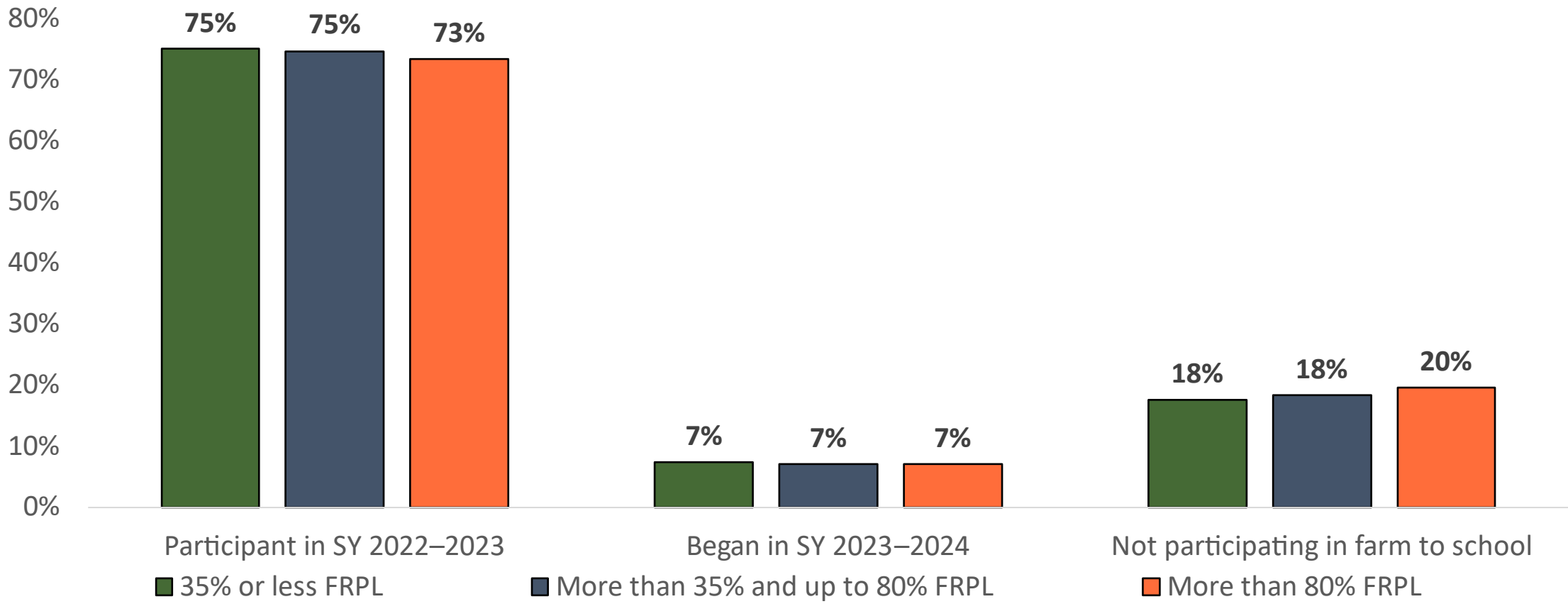


Farm to School Grade-level Participation



Farm to School across Household Incomes

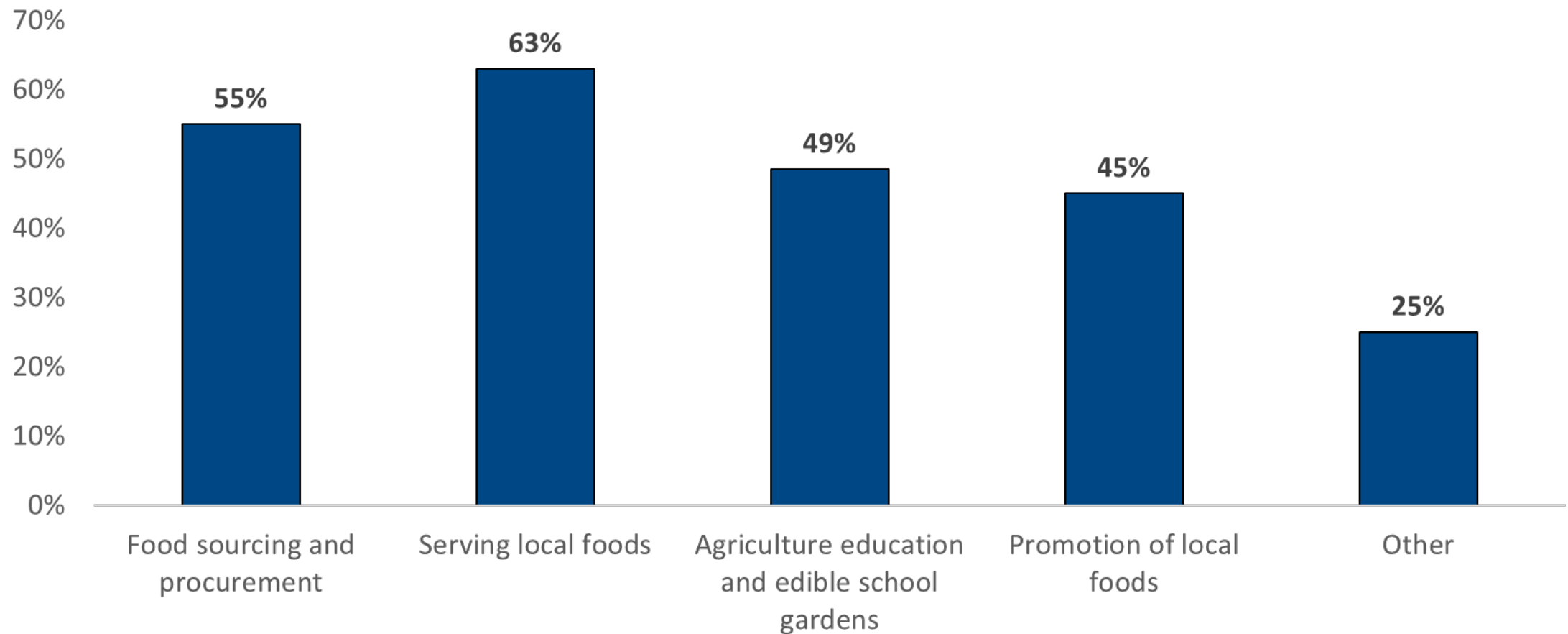
Farm to School Participation by FRPL*



*Free or Reduced-Price Lunches

Differing Farm to School Participation

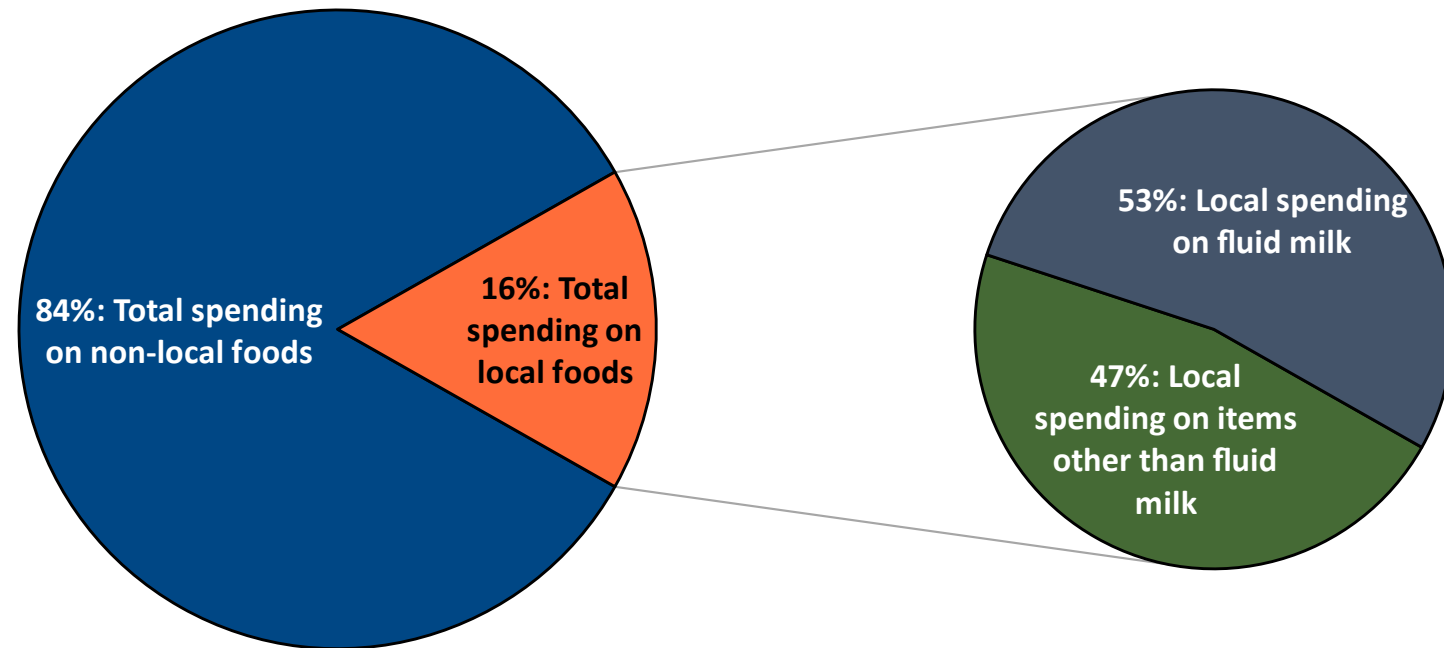
Participation in Farm to School Activities among All SFAs



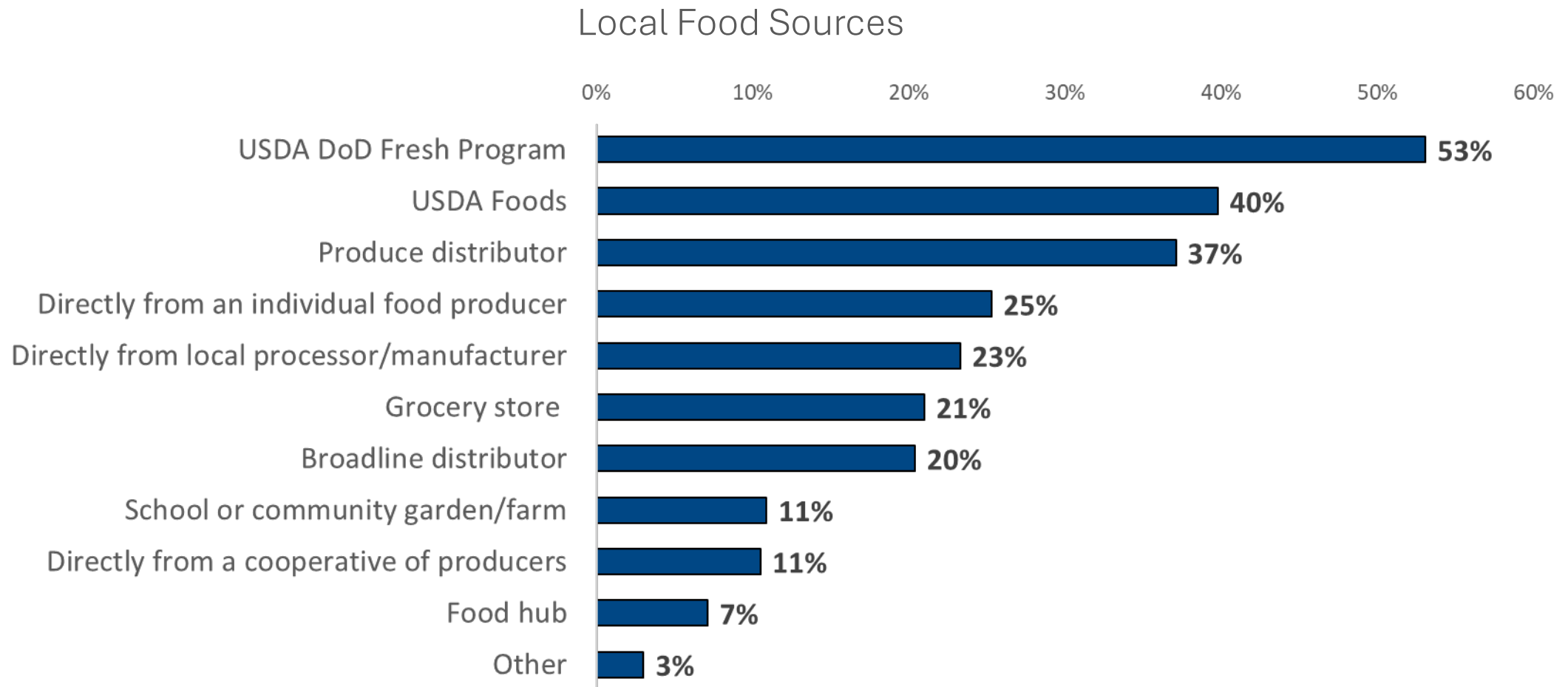
Most SFAs participating in farm to school served some kind of local food

- Definition of “local” varies by SFA
 - SFAs most commonly define local as being produced within the state
 - Many SFAs do not have a set definition of local

Food Spending by Expenditure Type



Varying Market Channels for Local Foods



Participation is possible regardless of kitchen facilities or food service operation type

Food Service Methods

- Compared to all SFAs, those that never participated in farm to school were:
 - More likely to serve vended meals
 - Less likely to be self-operated
- Food Service Management Companies (FSMCs)
 - Used by approximately 20% of all SFAs
 - Similar use of FSMCs across participation status

Food Preparation Facilities

- Compared to all SFAs, those that never participated in farm to school were:
 - More likely to report having no kitchen facilities
 - Less likely to report having school-based kitchens



SFAs Participating in Farm to School Reported at least One Positive Outcome

Top outcomes reported by SFAs participating in farm to school



Increased consumption of fruits and/or vegetables
in school meals (61%)



Access to better quality foods (57%)



Increased positive perception of school food program among
teachers and/or administrators (49%)

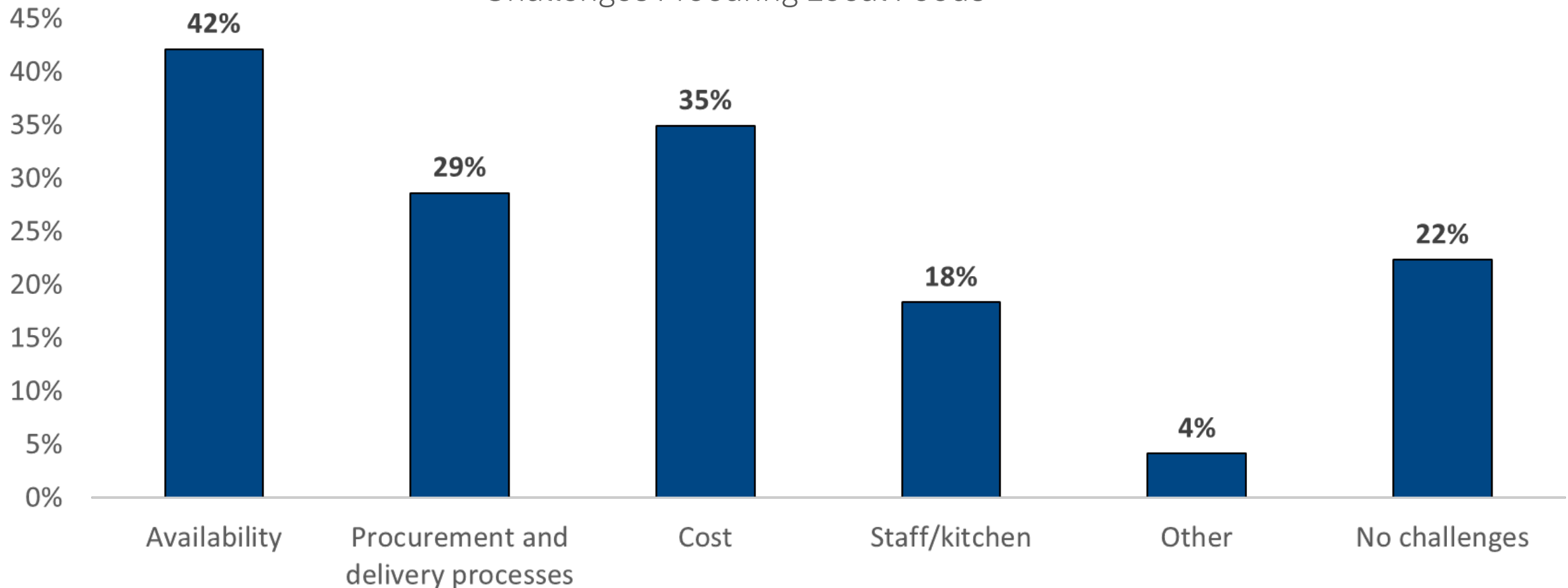
Policies Supporting Farm to School were More Common

- Increase in participating SFAs reported **wellness policies** that support farm to school
- Increase in participating SFAs reported **procurement policies** that support purchasing local foods



Availability of Local Foods is Greatest Challenge

Challenges Procuring Local Foods





Fostering a Supportive Environment

- Dedicating staff to farm to school
- Weaving farm to school into procurement and education practices
- Establishing funding for farm to school
- Piloting farm to school activities
- Launching or participating in task forces, working groups, and community councils

Part III: State-Level Data



The Basics

	Idaho	WRO	National
Response Rate	95%  	63.1%	66.3%
SFAs that Participate in F2S	73.4%	79.6%	76.6%
Students Reached by F2S Programming	84.5%	86.8%	89.1%

Farm to School Activities

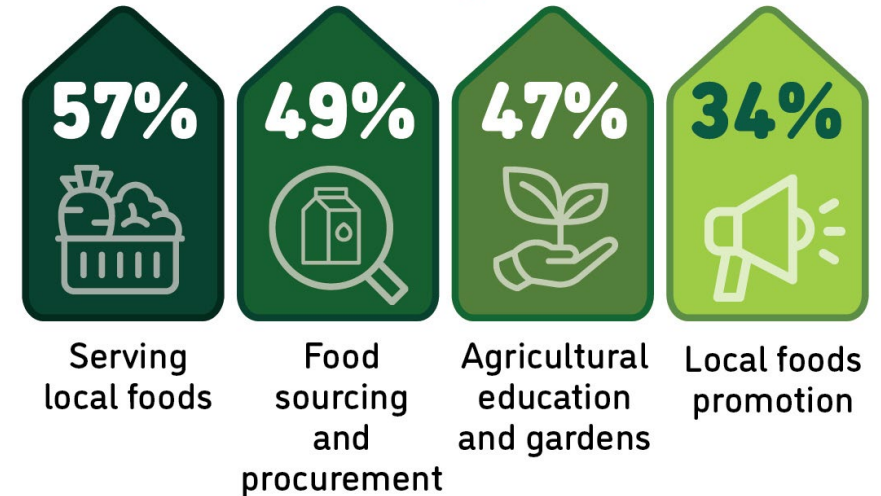
National

Farm to school activity participation
among SFAs



Idaho

Farm to school activity participation
among SFAs



Farm to School Challenges

National

Challenges farm to school SFAs faced when procuring local foods



Idaho

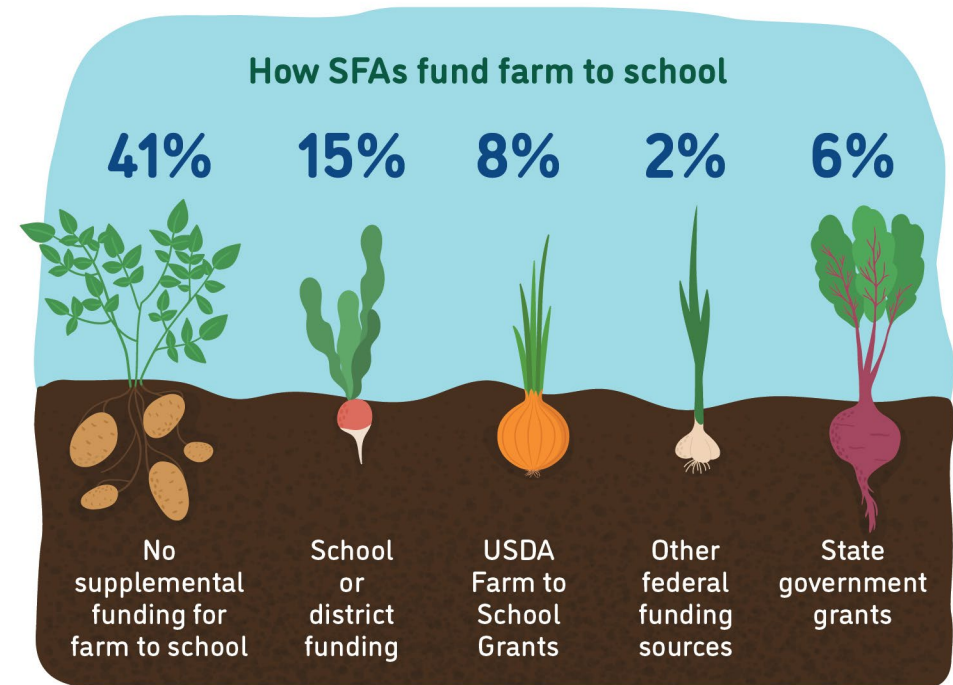
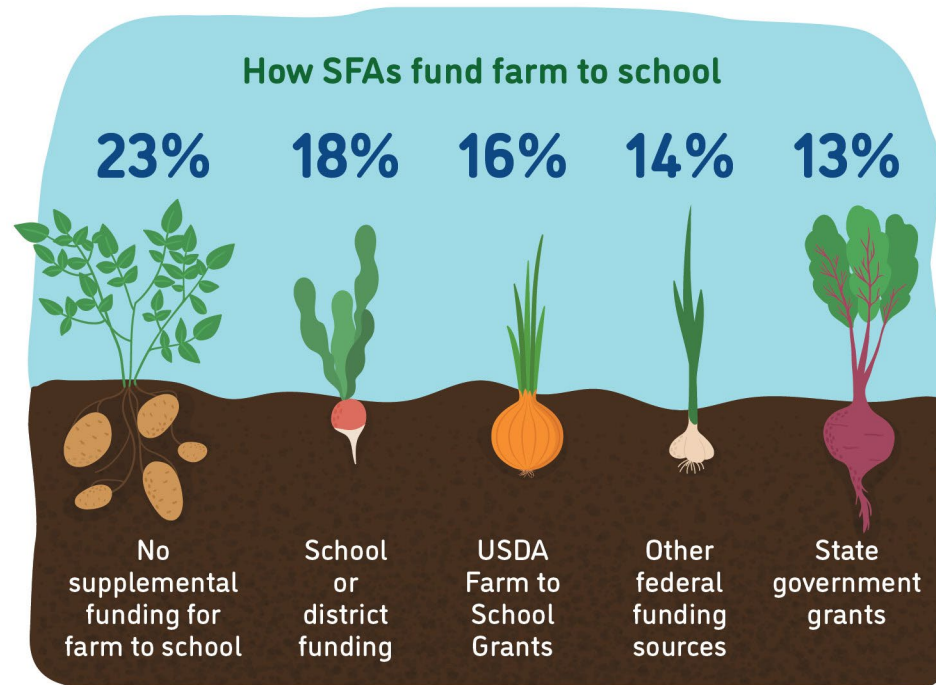
Challenges farm to school SFAs faced when procuring local foods



Farm to School Funding

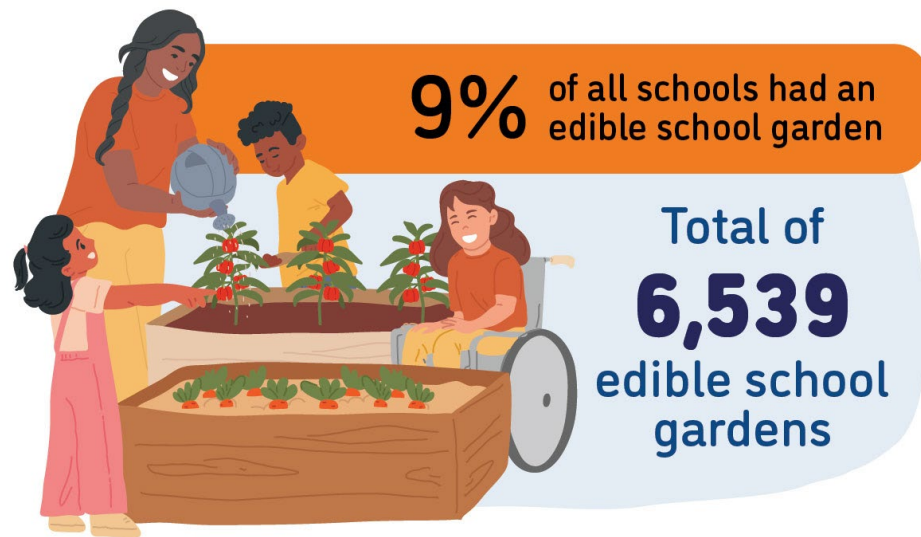
National

Idaho

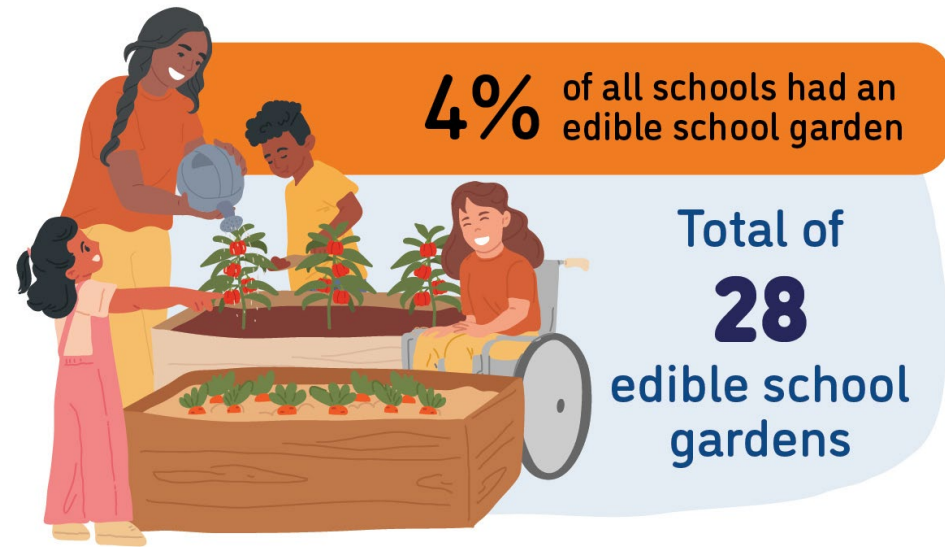


Farm to School Gardens

National



Idaho

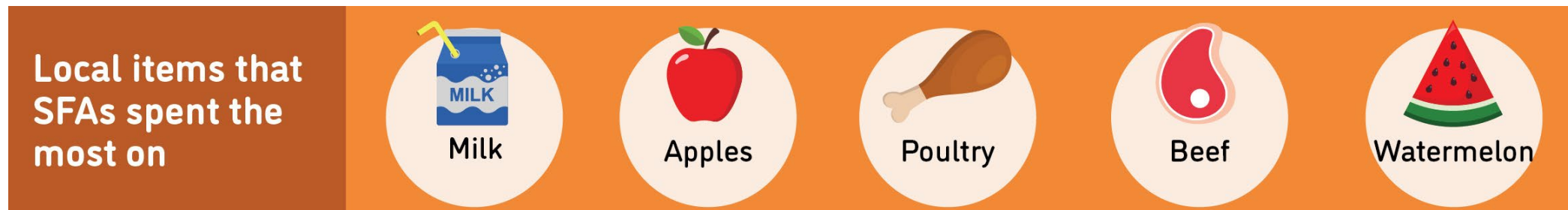


Farm to School Top Local Items

National



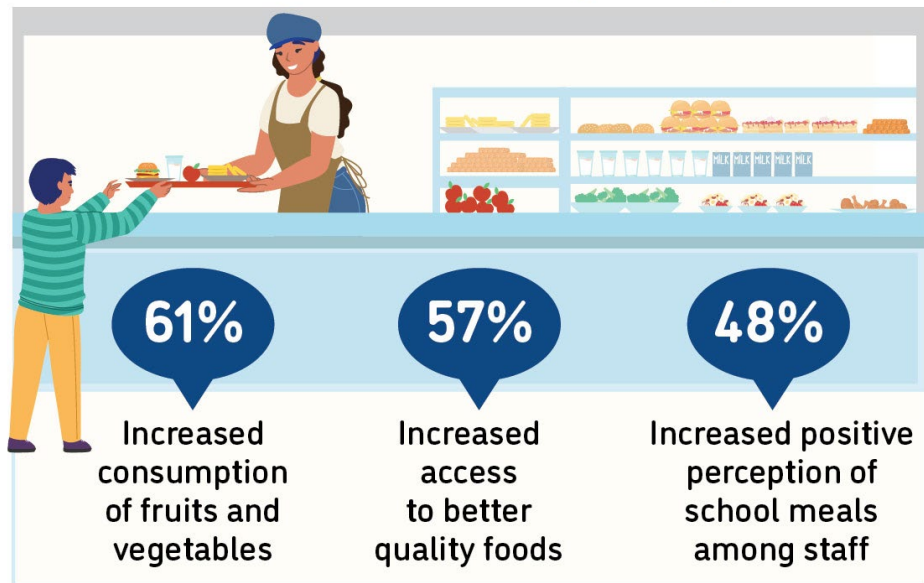
Idaho



Farm to School Outcomes

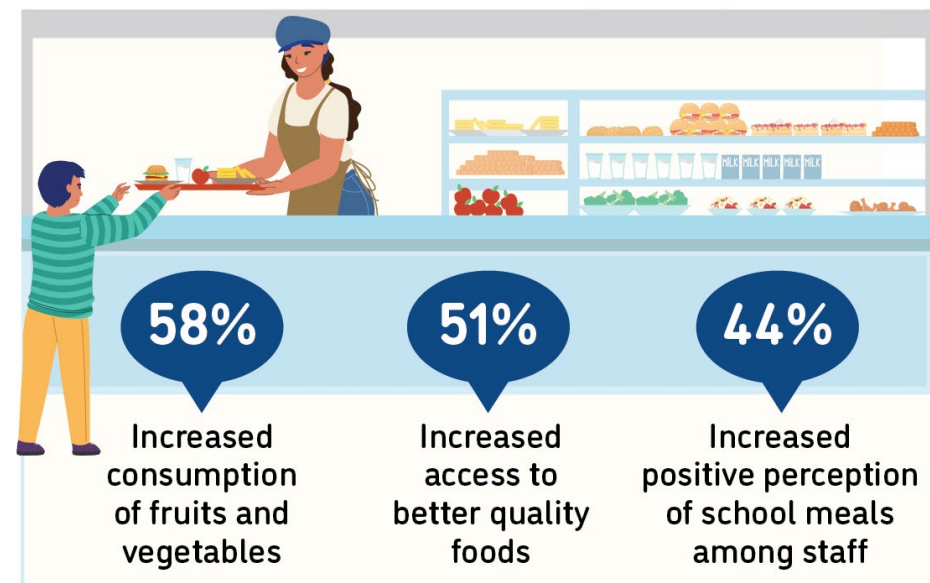
National

Positive outcomes of SFAs
from farm to school participation



Idaho

Positive outcomes of SFAs
from farm to school participation



Farm to School Participation

National

Farm to school participation increased from 2019 to 2023

2019 2023
65% of SFAs **74%**
did at least one
farm to school activity

These SFAs included **62,816** schools
and **34,038,095** students



Idaho

Farm to school participation in Idaho

Idaho Nationally
70% of SFAs **74%**
did at least one
farm to school activity

These SFAs included **507** schools
and **232,054** students



Farm to School Local Food Served

National

74% of all schools
served local food

81% of SFAs
participating
in farm to school
served local foods at
least weekly



Idaho

72% of all schools
served local food

71% of SFAs
participating
in farm to school served
local foods at least
weekly



Farm to School Spending

National

In total, SFAs spent

\$1.8 billion
on all local food

\$956 million
on local fluid milk alone

Among SFAs doing
farm to school,
16% of their spending
was on local foods

Idaho

In total, SFAs spent

\$7 million
on all local food

\$5 million
on local fluid milk alone

Among SFAs doing
farm to school,
17% of their spending
was on local foods

Farm to School Staffing

National

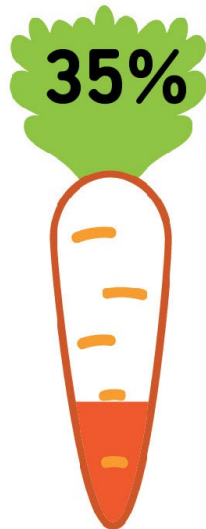
Farm to school SFAs with at least one staff member who used some of their time for farm to school

75%



Farm to school SFAs with at least one full-time staff member dedicated to farm to school

35%



Idaho

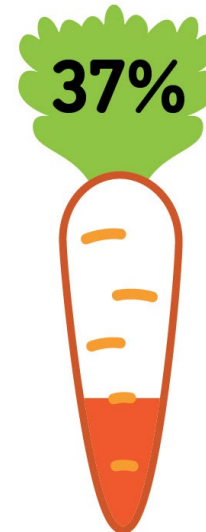
Farm to school SFAs with at least one full or part-time staff who used some of their time for farm to school

72%



Farm to school SFAs with at least one full-time staff dedicated to farm to school

37%



Farm to School Support Requested

National

SFAs that don't participate in farm to school would like

43%



More funding for
SFAs in general

42%



Training/technical assistance
on finding local foods

36%



Training/technical assistance
on procurement and delivery
processes for local foods

Idaho

SFAs that don't participate in farm to school would like

68%



Targeted funding to
improve kitchen capacity

68%



Training/technical assistance
on preparing local foods

59%



Training/technical assistance
on finding local foods

Where Do I Find Census Data for my State's SFAs?

<https://farmtoschoolcensus.fns.usda.gov/census-results>

Find nearby school food authorities (SFAs)

Search in the US

Search USDA's School Food Author

Search by Location

List SFAs within 25 miles

of 83702

Boise S. D. (83716) (11 miles)

Gem Prep: Meridian (83642) (12 miles)

Compass Public Charter School (83642) (13 miles)

West Ada S.d. (83642) (13 miles)

[What is an SFA? Is it different from a school district? ⓘ](#)



Food and Nutrition Service
U.S. DEPARTMENT OF AGRICULTURE



What's Next?



Where Do I Find Census Data?



B	C	D	E
	Description	Denominator	Relevant Variables
(Participating in Farms to School)	Total number of SFAs, number and percent of SFAs participating in F2S.	Total number of SFAs.	F2S
			Column 8 represents number of SFAs, the same as number participating in F2S, except it equals F-6.
eds Participating in Farms to School	Total number of schools, number and percent of all schools participating in F2S, total number of schools to which school participating in F2S, total number of schools participating in F2S among school SFAs	Total number of schools	NM_STUDENTS, Q2S4 F2S
nts Participating in Farms to School	Total number of schools, number and percent of all schools participating in F2S, total number of schools to which school participating in F2S, total number of schools participating in F2S among school SFAs	Total number of schools	NM_STUDENTS, F2S
20% Program Participation	Number and percent of all SFAs participating in the F2S (Breakfast Program (BFP), Summer Food Program (SFP)/Summer Summer Option (SSO), Fresh Fruit and Vegetable Program (FFVP), Child and Adult Care Food Program (CACFP), CACFP at-Home Alternative, NSLP alternative network Service, or only NSLP	Total number of SFAs	Q2
Activities:	Number and percent of all SFAs participating in F2S activities: Number and percent of all SFAs conducting at least one F2S category of service for local foods, promoting local foods, growing on-site food education, involving and educating the community, and other F2S activities	Total number of SFAs	Q7
Activity Categories:	Number and percent of all SFAs participating in F2S activities: Number and percent of all SFAs conducting at least one F2S category of service for local foods, promoting local foods, growing on-site food education, involving and educating the community, and other F2S activities	Total number of SFAs	Q7
Participating in Farms to School, Among Farm	Number and percent of all SFAs participating in F2S activities: Number and percent of all SFAs conducting at least one F2S category of service for local foods, promoting local foods, growing on-site food education, involving and educating the community, and other F2S activities	Total number of farms to school SFAs	Q18 F2S
ing in Farms to School (Local Food)	Number and percent of all SFAs participating in F2S activities: Number and percent of all SFAs conducting at least one F2S category of service for local foods, promoting local foods, growing on-site food education, involving and educating the community, and other F2S activities	Total number of SFAs	Q19 NM_STUDENTS, Q2S6
20% Program Participation	Number and percent of all SFAs participating in F2S activities: Number and percent of all SFAs conducting at least one F2S category of service for local foods, promoting local foods, growing on-site food education, involving and educating the community, and other F2S activities	Total number of SFAs	Q2
90% School for School Food	Number and percent of all SFAs participating in F2S activities: Number and percent of all SFAs conducting at least one F2S category of service for local foods, promoting local foods, growing on-site food education, involving and educating the community, and other F2S activities	Total number of SFAs	Q2



	C	D
	RGN_TXT	SFA_NAME
	Mid-Atlantic Regional Office (MARO)	Dc Public Schools (Dcps)
	Mid-Atlantic Regional Office (MARO)	Dc Bilingual Public Charter School
	Mid-Atlantic Regional Office (MARO)	El Haynes Public Charter School
	Mid-Atlantic Regional Office (MARO)	Eagle Academy Pcs
	Mid-Atlantic Regional Office (MARO)	Early Childhood Academy Pcs
	Mid-Atlantic Regional Office (MARO)	Brive Pcs
	Mid-Atlantic Regional Office (MARO)	Friendship Pcs
	Mid-Atlantic Regional Office (MARO)	Hope Community Pcs
	Mid-Atlantic Regional Office (MARO)	Cedar Tree Academy Pcs
	Mid-Atlantic Regional Office (MARO)	Howard Univ. Middle School
	Mid-Atlantic Regional Office (MARO)	Idea Pcs
	Mid-Atlantic Regional Office (MARO)	Meridian Pcs
	Mid-Atlantic Regional Office (MARO)	Roots Pcs
	Mid-Atlantic Regional Office (MARO)	Seed Public Charter School
	Mid-Atlantic Regional Office (MARO)	Elsie Whitlow Stokes Pcs
	Mid-Atlantic Regional Office (MARO)	Next Step Pcs
	Mid-Atlantic Regional Office (MARO)	Thurgood Marshall Academy Pchs
	Mid-Atlantic Regional Office (MARO)	Washington Latin Pcs

Farm to School Census website

- Answers to select survey questions for each SFA that responded
- Key State-level and national data
- Links to other products

National and State Data Workbook

- Key data for the U.S. and each State
- Formatted for use in Excel

2023 Farm to School Census Report

- Overview of farm to school in the U.S.
- Tables with national findings
- Detailed methodology
- Survey instrument

Full Public-Use Dataset

- Responses to each question for every SFA that responded
- Formatted for use in statistical analysis software



Using the Farm to School Census

- Describing level of activity when applying for various grants;
- Inform future farm to school planning;
- Promote progress in supporting local food producers;
- Help producers identify school buyers for future products.

Need help with Data Interpretation and/or Analysis?

Regional specialists can help with simple questions

For more complex analysis, options might include:

- Student/school data teams at Department of Education
- Ag economists at Department of Agriculture
- Epidemiologists at Department of Health
- University partnerships (especially graduate researchers)
- Paid consultants

Help Us Keep the Farm to School Census Top of Mind

- When you use census data, cite that it is from the Census
- Encourage SFAs and other organizations to refer to Census data when problem-solving and writing reports/grant applications



Questions?

