



# ESEA IDEA Federal Programs Directors Meeting

## Special Education Get to Know Us



*Idaho State Department of Education*

DEBBIE CRITCHFIELD, SUPERINTENDENT OF PUBLIC INSTRUCTION

# State Special Education Director- Chynna Hirasaki



**IDAHO**  
STATE DEPARTMENT OF EDUCATION

*Idaho State Department of Education*

DEBBIE CRITCHFIELD, SUPERINTENDENT OF PUBLIC INSTRUCTION



ESEA IDEA GET TO KNOW US

# Meet the SDE Special Education Team



**Chynna Hirasaki**  
Director



**Melissa Knutzen**  
Administrative  
Assistant



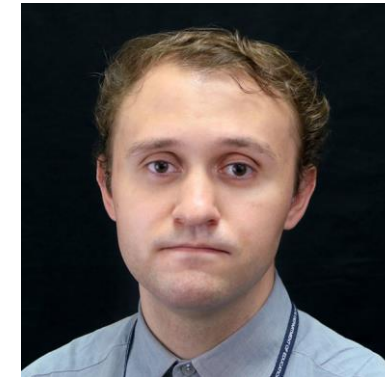
**Kimberli Shaner**  
Dispute Resolution  
Coordinator



**Elizabeth Congden**  
Dispute Resolution  
Program Specialist, Sr.



**Lisa Pofelski-Rosa**  
Funding & Accountability  
Coordinator



**Israel Silva**  
Contracts  
Financial Specialist, Sr.



# Meet the SDE Special Education Team



**Shannon Dunstan**  
SSI & EC  
Coordinator



**Kailey Bunch-Woodson**  
Program Evaluations  
Coordinator



**Debi Smith**  
Support & Monitoring  
Coordinator



**Karren Streagle**  
Alt. Assessment, Low Incidence  
& Medicaid Coordinator



**Alisa Fewkes**  
Data & Reporting  
Coordinator



**Randi Cole**  
Secondary Special Education  
Coordinator

# Our Commitments to you-



- Be Visible and Available
- Allow for Transparent, Authentic, and Timely Communication (2 ways)
- Be Service- Oriented: "How Can We Help?"



# Please reach out!



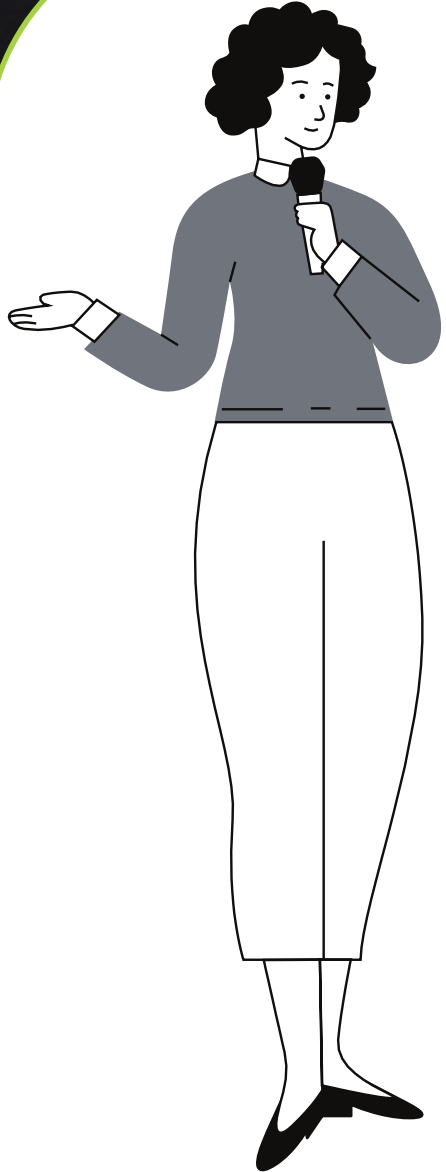
Chynna Hirasaki | Special Education Director  
Idaho State Department of Education  
650 W State Street, Boise, ID 83702  
208.332.6806  
[chirasaki@sde.idaho.gov](mailto:chirasaki@sde.idaho.gov)  
[www.sde.idaho.gov](http://www.sde.idaho.gov)



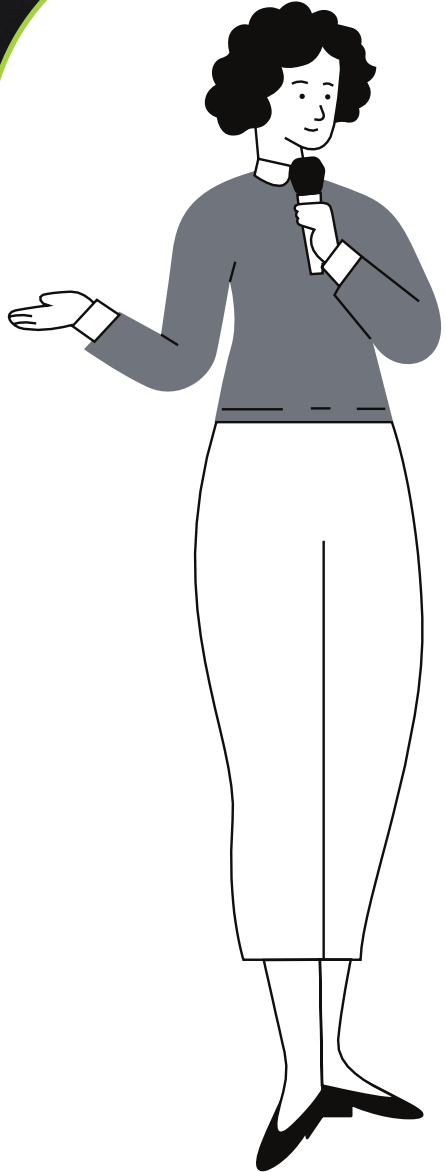
**Idaho State Department of Education**

DEBBIE CRITCHFIELD, SUPERINTENDENT OF PUBLIC INSTRUCTION

ESEA IDEA GET TO KNOW US



# Introducing Idaho SESTA!



# Introducing Idaho SESTA!



# WHAT IS IDAHO SESTA?

Idaho SESTA is a collaborative project at Boise State University and the University of Idaho

Idaho SESTA is funded by the Idaho State Department of Education, Special Education Department



## IDAHO SESTA

SPECIAL EDUCATION SUPPORT  
& TECHNICAL ASSISTANCE



**BOISE STATE UNIVERSITY**

COLLEGE OF EDUCATION

*Center for School and Community Partnerships*





# Be in the Know!

Resources to support you as you support your team!

[Click here to sign up for the SESTA newsletter!](#)

# Navigating the ITC for SESTA Resources



HOME RESOURCES CALENDAR REGISTRATION WEBINARS FOR CREDIT **SESTA**



Job Opening: Special Education Statewide Instructional/Behavioral Coordinator - Moscow, Coeur d'Alene.

## Quick Links

Quick Guides Library

Help Desk Request

Assessment Lending Library

Newsletters

## Resource Collections

The following are one-click links to web pages that contain a collection of common resources. If a collection or topic page does not exist, search by keyword under the 'Search Resources' section below. [Reach out to the Idaho Training Clearinghouse](#) if you can't find what you're looking for.

Augmentative &  
Alternative Communication

Assistive Technology Tools

Behavior: 101

Behavior:  
Challenging Behavior

Behavior:  
Classroom Management

Behavior:  
Progress Monitoring

Data-driven Decision Making

Early Childhood:  
Behavior Management



# Thanks!

## Any questions?

Find resources at [www.idahotc.com](http://www.idahotc.com)

[Submit a Help Desk ticket](#)





# Funding & Fiscal Accountability

Lisa Pofelski-Rosa, Financial Specialist, Principal

Israel Silva, Financial Specialist, Senior



# Special Education Funding and Fiscal Accountability



## Who are we, and what do we do?

- Oversee Federal Funds for IDEA Part B
- Approve LEA IDEA Part B grant applications
- Process reimbursement requests (GRA)
- Fiscal Monitoring of sub recipients
- Provide training opportunities regarding federal fiscal compliance



# Individuals with Disabilities Education Act (IDEA)



## IDEA Part B and Preschool Federal Grant Funds

- Idaho receives federal funding annually from the U.S. Department of Education.
- The purpose is to assist states in meeting the costs of providing special education and related services to children with disabilities.
- Allocations are determined according to a formula outlined in IDEA law.
- Funding is subject to certain eligibility requirements and other conditions, as outlined in IDEA regulations.

# IDEA Part B Application Resources



The Idaho SDE must ensure fiscal accountability at each phase in the distribution and use of IDEA Part B and Preschool funds.

The SDE has established policies and procedures for calculating, allocating, requesting, accessing, reporting and verifying IDEA Part B flow-through funding.



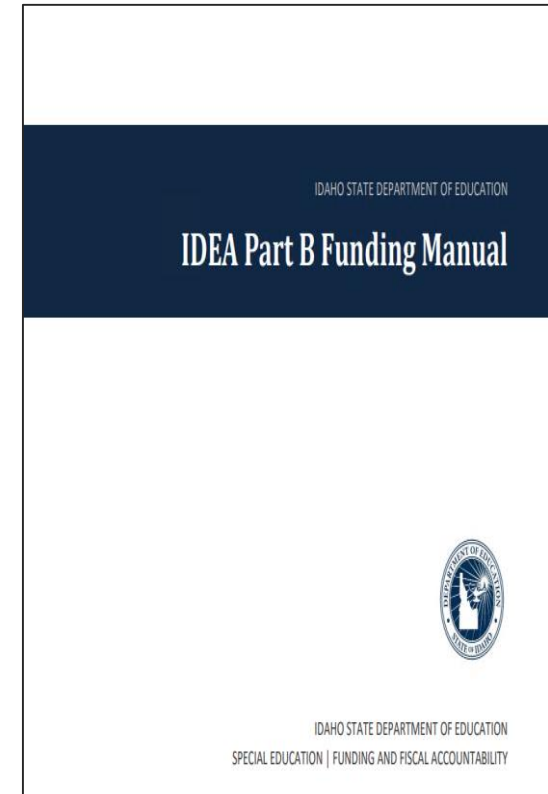


# IDEA Part B Funding Manual



The purpose of the SDE's online IDEA Funding Manual is to provide a comprehensive overview of fiscal policies, procedures, and mechanisms by which SDE accounts for IDEA funds requirements.

The IDEA Part B [Funding Manual](#) provides detailed descriptions of the many components, compliance and restrictions, and overall Allowability or use of funds.  
--Reference it often.



# IDEA Application Resources



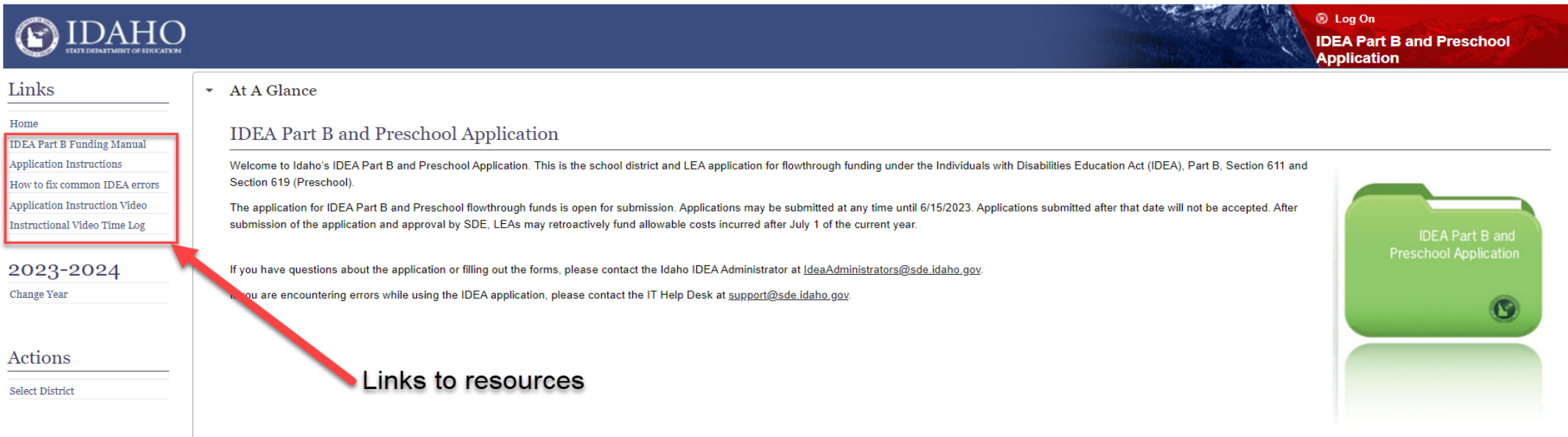
[Application instructions](#)

[How to fix common IDEA errors](#)

[Recorded IDEA Part B Application training video.](#)

[Instructional Video Time Log by section.](#)

DEPARTMENTS COMMUNICATIONS

A screenshot of the Idaho Department of Education's IDEA Part B and Preschool Application page. The page has a dark blue header with the Idaho Department of Education logo and a red banner on the right that says "Log On" and "IDEA Part B and Preschool Application". The main content area is titled "At A Glance" and "IDEA Part B and Preschool Application". It includes a welcome message and instructions for submission. A red arrow points to a "Links" sidebar on the left, which contains a list of links: "Home", "IDEA Part B Funding Manual", "Application Instructions", "How to fix common IDEA errors", "Application Instruction Video", and "Instructional Video Time Log". Below the links is a "2023-2024" section with a "Change Year" link. At the bottom left is an "Actions" section with a "Select District" link. On the right side of the page is a green folder icon labeled "IDEA Part B and Preschool Application".

Log On  
IDEA Part B and Preschool Application

Links

- Home
- IDEA Part B Funding Manual
- Application Instructions
- How to fix common IDEA errors
- Application Instruction Video
- Instructional Video Time Log

2023-2024

Change Year

Actions

Select District

At A Glance

### IDEA Part B and Preschool Application

Welcome to Idaho's IDEA Part B and Preschool Application. This is the school district and LEA application for flowthrough funding under the Individuals with Disabilities Education Act (IDEA), Part B, Section 611 and Section 619 (Preschool).

The application for IDEA Part B and Preschool flowthrough funds is open for submission. Applications may be submitted at any time until 6/15/2023. Applications submitted after that date will not be accepted. After submission of the application and approval by SDE, LEAs may retroactively fund allowable costs incurred after July 1 of the current year.

If you have questions about the application or filling out the forms, please contact the Idaho IDEA Administrator at [IdeaAdministrators@sde.idaho.gov](mailto:IdeaAdministrators@sde.idaho.gov).

If you are encountering errors while using the IDEA application, please contact the IT Help Desk at [support@sde.idaho.gov](mailto:support@sde.idaho.gov).

IDEA Part B and Preschool Application

Links to resources

# Important Fiscal Dates



- June 15, 20XX: IDEA Part B and Preschool *preliminary grant application* due date.
- October 15, 20XX: Submission of total actual enrollment and low-income count by new and significantly expanding charter schools.
- November 15, 20XX: IDEA Part B and Preschool *final grant application* due date.
- December 20XX: Fiscal monitoring activities. LEAs selected will be notified by email.
- January 6, 20XX: Tuition Equivalency application due date.

# Training Opportunity - FFGCoP



## Federal Fiscal Grants - Communities of Practice (FFGCoP)

- Is a monthly SDE hosted webinar on the 3<sup>rd</sup> Thursday of each month at 10am MST.
- This group is open to anyone desiring to learn more about 'Best Practices for Grants'
- The purpose of this community of practice is to provide learning and sharing opportunities between the SDE and the LEAs and to mitigate errors and fill in the gaps on grant management & principles, in a supportive peer learning environment.

**The SDE FFGCoP - Leading with courage, strategy, and confidence!**

[2023-2024 FFGCoP Registration Link](#)





# Special Education Funding Contact Information



## **Lisa Pofelski-Rosa**

Funding and Accountability Coordinator

—Financial Specialist Principal

[Lpofelskirosa@sde.idaho.gov](mailto:Lpofelskirosa@sde.idaho.gov)

Phone: (208)332-6916

## **Israel Silva**

Contracts & Senior Fiscal Specialist

[isilva@sde.idaho.gov](mailto:isilva@sde.idaho.gov)

Phone: (208) 332-6910

Website: <http://www.sde.idaho.gov/sped/>





**IDAHO**  
STATE DEPARTMENT OF EDUCATION

# Secondary Transition

Randi Cole

Secondary Special Education Coordinator



***Idaho State Department of Education***

DEBBIE CRITCHFIELD, SUPERINTENDENT OF PUBLIC INSTRUCTION

# Secondary Transition Resources



- Resources on ITC
  - [Secondary Transition topic page](#)
- Secondary Transition topics:
  - Graduation
  - Dropout
  - Post-School Outcomes (Indicator 14)
  - Secondary Transition in the IEP
  - Secondary services, programs, assessment, etc.

# Secondary Transition Institute



USING PERSON-CENTERED PLANNING TO SUPPORT  
STUDENTS

- November 14-15
- The Riverside Hotel, Boise
- Team Lead Registration open
  - [Team Lead Registration and Survey](#)







**IDAHO**  
STATE DEPARTMENT OF EDUCATION

# Data and Reporting 2023-2024

**Alisa Fewkes**

Data and Reporting Coordinator



***Idaho State Department of Education***

DEBBIE CRITCHFIELD, SUPERINTENDENT OF PUBLIC INSTRUCTION

# Special Education Important Dates



## Special Education Important Due Dates

### Special Education Important Dates 2023 – 2024

Missing reporting due dates included below may count against district determinations and or result in a finding of non-compliance. For due dates related to IDEA funding please see the Special Education Funding & Fiscal Accountability page.

Due Date	Activity	Description	Contact
August 1	Special Education Initial Eligibility Data Corrections	Last date to submit the Summer Initial Eligibility Reporting Form and any corrections to data for the prior June Idaho System for Educational Excellence (ISEE) upload related to initial eligibility evaluation data including Indicator 11 - Child Find (60-day timeline) and Indicator 12 - Early Childhood Transition.	Alisa Fewkes (208) 332-6919
August	At-Risk for Disproportionality Webinar	Required webinar for LEAs determined to be At-Risk by race/ethnicity for significant disproportionality, significant discrepancy, or disproportionate representation.	Debi Smith (208) 332-6915
September 1	Timeline Compliance Notifications	Notifications of noncompliance issued to LEAs for Indicator 11 - Child Find (60-day timeline) and Indicator 12 - Early Childhood Transition based on prior year data.	Debi Smith (208) 332-6915
November 1	General Supervision File Review (GSFR)	Compliance Tracking Tool (CTT) opens up for district/charters to select student files to review and then begin the General Supervision File Review (GSFR) process utilizing the GSFR checklists. Note, if a students will only show for selection if they have been reported in an ISEE upload for the current school year. For login issues contact Support at: (208) 332-6987.	Debi Smith (208) 332-6915

# ISEE Special Education Data Collection



## Reporting Special Education Data to the state in Idaho System for Educational Excellence (ISEE)

- 60-Day Timeline
- Environments
- Early Childhood Transition
- Program Exit
- Disciplinary Action

### Public Reporting

The Individuals with Disabilities Education Act (IDEA) and Section 618 requires states to make publicly available data on programs serving children ages 3 through 21 (Part B) including the count of students served and performance on State Performance Plan/Annual Performance Report (SPP/APR) priority indicators. The data provided through public reporting increases transparency, accountability, and provides local education agencies (LEAS) with an opportunity to apply data to improve outcomes for all youth with disabilities served under IDEA. For a complete copy of the most recent SPP/APR and State level determination issued by the Office of Special Education Programs (OSEP) go to the [OSEP Grads360 website](#).

[Secure Server for Data Verification/Monitoring](#) | ➔

Files FAQs Training Links

#### Resource Files

##### General Information

- [Reporting Special Education Data in ISEE](#)
- [Special Education Important Due Dates](#)
- [Special Education Students ISEE Quick Guide](#)

# Other Data Collection



- Special Education Data Collection Application
  - Early Childhood Outcomes
  - Early Childhood Transition
    - Early tracking and verification
- Indicator 8 – Parent Involvement Survey
- Indicator 14 – Post-school Outcomes Survey



# Check Application Access



## Main Applications

- [Compliance Tracking Tool \(CTT\)](#)
- [Special Education \(SPED\) Data Application](#)
- [IDEA Funding Application](#)

## Resource

- [Roles for Special Education Applications](#)



# Who needs to be reported to the state?



Federal requirements for the Individuals with Disabilities Education Act (IDEA) mandate reporting of:

- Students that receive(ed) special education and related services.
  - IEP
  - Service Plan
- Students for whom parental consent to assess for initial eligibility was received.

# Students on an IEP or Service Plan



All students ages 3-21 who receive(ed) special education and related services.

- All disability categories;
  - Speech/Language Impairment;
- All grade levels (PK – 12);
  - PK regardless of service location;
  - Kindergarten age eligible (**grade KG**)
  - Grade 12 may include students participating in secondary transition services;

# Consent for Initial Assessment Received



All students (ages 3-21) for whom the LEA has received parental consent to assess for initial eligibility must be reported to the state.

- Determined Eligible
- Determined not to qualify (SeStatus = T-Tested Ineligible)
- Undetermined - Eligibility was not able to be determined
  - Moved
  - Withdrawn by Parent (consent for initial assessment revoked)
  - Deceased

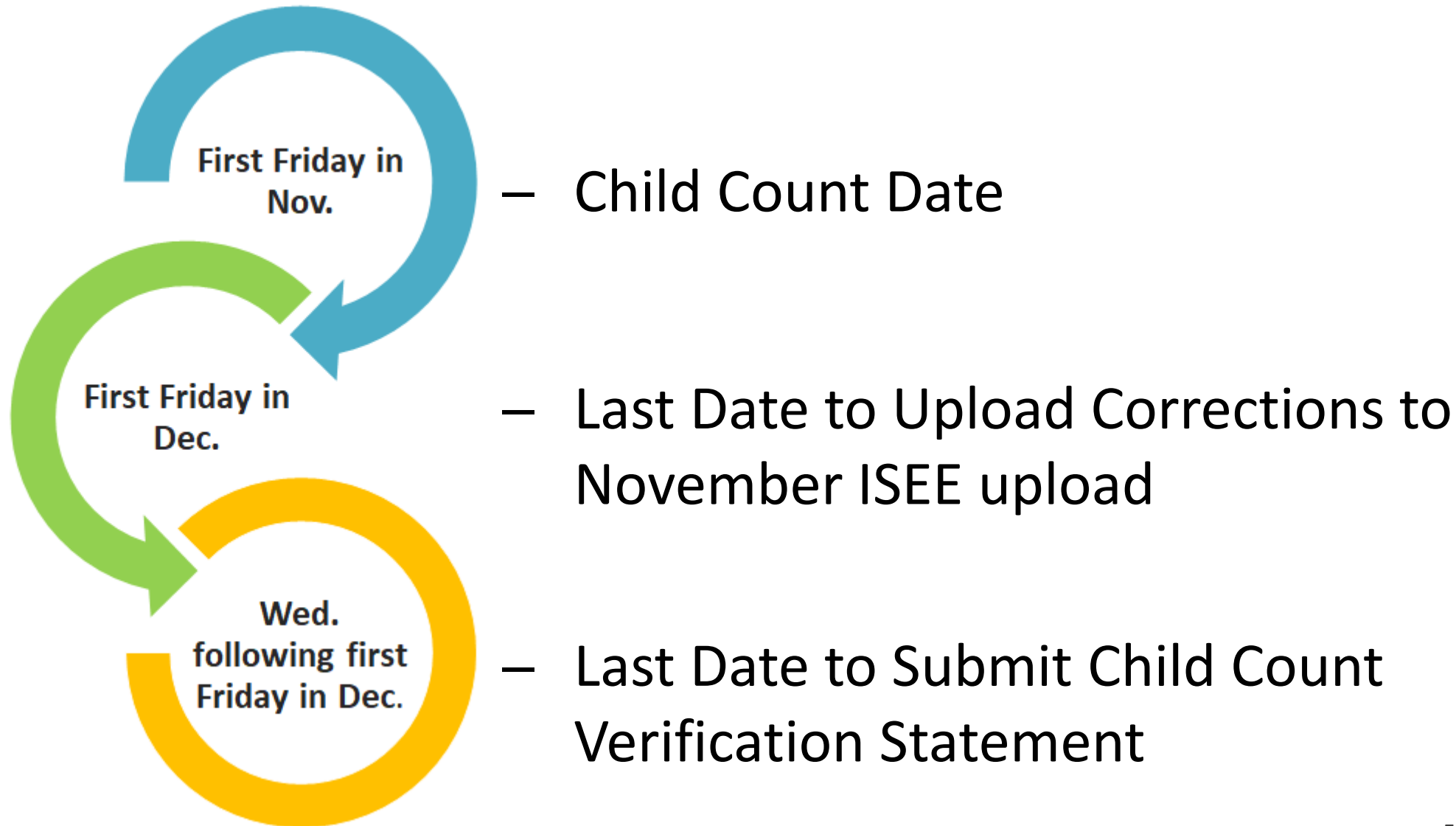
# Child Count



Annual report of students receiving special education and related services.

- Snapshot
- First Friday in November
- Students must be;
  - Active and receiving services
  - Current IEP/Service plan
- Used in multiple IDEA indicators and calculations

# Child Count - Timeline







## Preschool FTE Equivalency

State funds calculated using the minutes per week (minPerWeek) field.

- Submitted through ISEE
  - Special Education Students file
  - PK grade only

# Thank you!



**Alisa Fewkes** | Data and Reporting Coordinator  
[afewkes@sde.idaho.gov](mailto:afewkes@sde.idaho.gov)

208-332-6919



**IDAHO**  
STATE DEPARTMENT OF EDUCATION

***Idaho State Department of Education***

DEBBIE CRITCHFIELD, SUPERINTENDENT OF PUBLIC INSTRUCTION

IDAHO STATE DEPT. OF EDUCATION  
SPECIAL EDUCATION



# CULTIVATING READERS

THROUGH EVIDENCE-BASED PRACTICES IN  
INSTRUCTION & COACHING

*“Only about 1 in 10 students who were “far off track” in reading or math in 4th grade met the on-track benchmarks in 8th grade, suggesting these children’s academic gaps start early and never close.”*

<https://www.edweek.org/education/students-who-struggle-early-rarely-catch-up-study-says/2012/12>

# CULTIVATING READERS VISION & MISSION

## **VISION**

All students learn to read!

## **MISSION**

Provide schools/districts evidence-based professional development to help them implement and sustain their Multi-Tiered Systems of Support for Reading, delivery of explicit reading instruction in grades K-3, and instructional coaching. This will lead to improved reading proficiency for all students including students with disabilities.



# PROFESSIONAL DEVELOPMENT



A large light blue oval contains four smaller circles of different colors. From left to right, the circles are dark blue, green, purple, and brown. Each circle contains text. The dark blue circle contains 'Principals and special education directors'. The green circle contains 'Instructional coaches'. The purple circle contains 'General and special education teachers'. The brown circle contains 'Parents and families'.

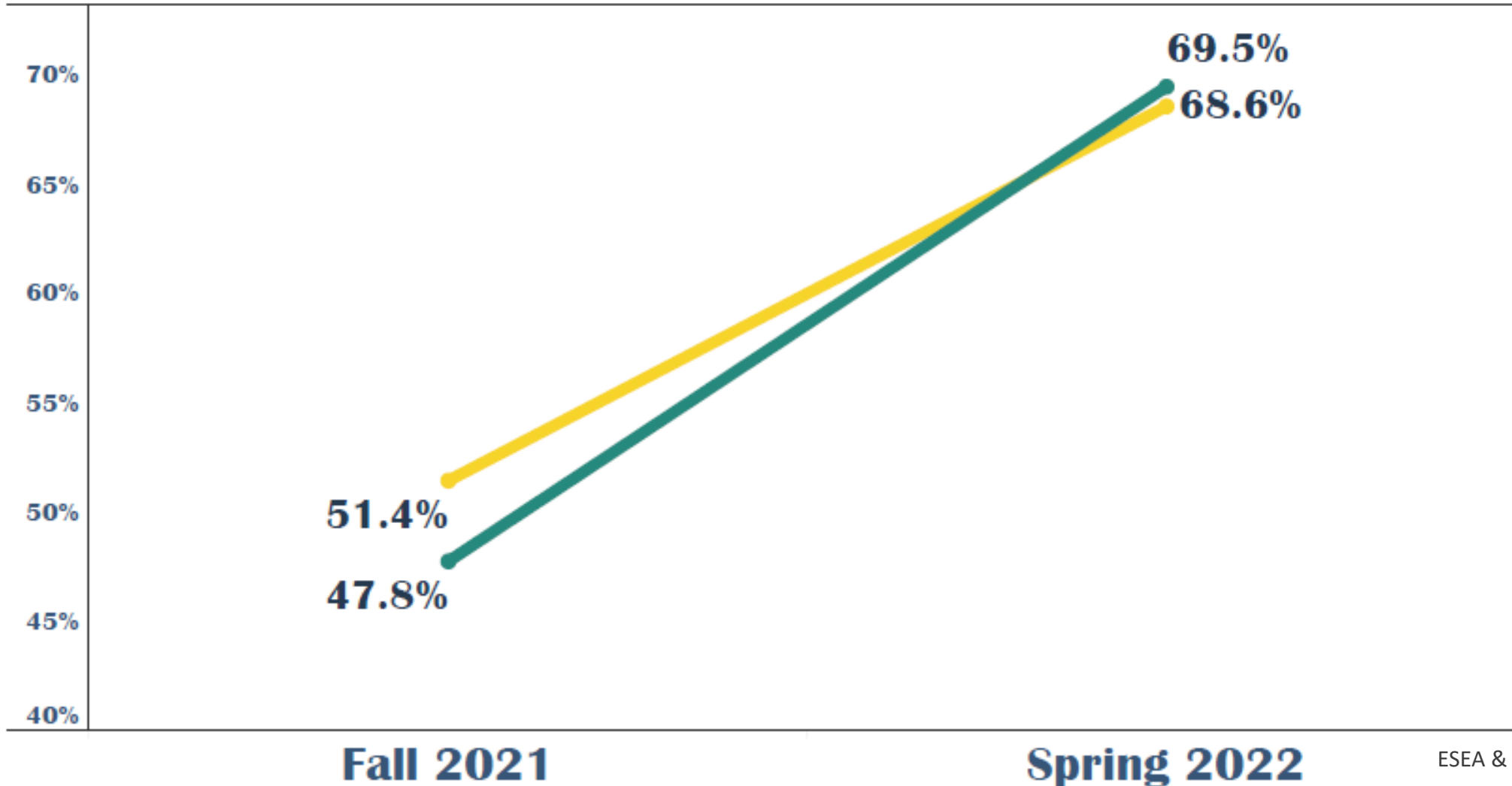
Principals  
and  
special  
education  
directors

Instructional  
coaches

General  
and  
special  
education  
teachers

Parents  
and  
families

**Cultivating Readers** schools made **4.5 percentage points** greater growth on the IRI in 2021-22 than **non-Cultivating Readers schools**



# CULTIVATING READERS



CULTIVATING READERS WEBSITE

[IDAHOTC.COM/READERS](http://IDAHOTC.COM/READERS)

Applications in January



# Early Childhood Special Education

Shannon Dunstan

Early Childhood Coordinator





# Office of Special Education Program Priorities



Three areas of focus:

- Least Restrictive Environment
- Early Childhood Outcomes
- Timely Transitions from Part C to B



[This Photo](#) by Unknown Author is licensed under [CC BY-NC-ND](#)



# Data Collection and Timelines



[This Photo](#) by Unknown Author is licensed under [CC BY-NC-ND](#)

## Least Restrictive Environment

- IEP and reported in ISEE – age 3 until kindergarten age eligible

## Early Childhood Outcomes

- Special Education Data Collection System – Entrance and Exit

## Timely Transitions

- Captured in ISEE

# Resources, Trainings, and Opportunities



- Idaho Training Clearinghouse
- Idaho Pyramid Collaborative
- For Credit Courses
- Resources



[This Photo](#) by Unknown Author is licensed under [CC BY](#)

I am here to support you and  
your staff!!

Shannon Dunstan  
Early Childhood Coordinator  
[sdunstan@sde.idaho.gov](mailto:sdunstan@sde.idaho.gov)  
208-332-6908



**IDAHO**  
STATE DEPARTMENT OF EDUCATION

***Idaho State Department of Education***

DEBBIE CRITCHFIELD, SUPERINTENDENT OF PUBLIC INSTRUCTION



**IDAHO**  
STATE DEPARTMENT OF EDUCATION

# Dispute Resolution

Kimberli Shaner | Dispute Resolution Coordinator

Elizabeth Congdon | Dispute Resolution Program Specialist



***Idaho State Department of Education***

DEBBIE CRITCHFIELD, SUPERINTENDENT OF PUBLIC INSTRUCTION



# Have You Ever . . .



**Received a request for services that was not agreed upon by the whole team?**



# And Have You Ever . . .



Walked out of an IEP meeting feeling it was awesome only to find out that someone thought it was the worst meeting ever?





# Did You Ever Have A Time When. . .



**You felt like  
members of  
the IEP team  
just aren't  
willing to  
engage or  
listen?**



# There Are Options . . .



- Facilitation
- Mediation
- State Complaint
- Due Process Hearing

# We're Here to Help



Conflict provides opportunities.

Perceptions of neutrality, fairness, and transparency are the currency of the office.

Everyone deserves to be heard and understood.

Aim to resolve at the lowest level appropriate.

Good outcomes are child-centered and legally defensible.

# How to Request Dispute Resolution Services



Complete a request form and email it to our office.

<https://www.sde.idaho.gov/sped/dispute/index.html>

Files | FAQs | Training | Links

## Resource Files

### General Files

- Dispute Resolution Comparison Chart - Reviewed 2021
- Discipline and Manifestation Determination Flowchart - Reviewed 2021
- Andrew F. Supreme Court Ruling Update - Reviewed 2021

### Facilitation

- Facilitation Parent Guide | (versión en español) - Reviewed 2021
- Facilitation Request Form (Fillable) - Reviewed 2021
- Facilitation Request Form (Printable) | (versión en español) - Reviewed 2021

### Mediation

- Mediation Parent Guide | (versión en español) - Reviewed 2021
- Mediation Request Form (Fillable) - Reviewed 2021
- Mediation Request Form (Printable) | (versión en español) - Reviewed 2021

### State Administrative Complaint

- State Administrative Complaint Form (Fillable Version) - Reviewed 2021
- State Administrative Complaint Form (Print Only Version) | (versión en español) - Reviewed 2021
- Procedural Safeguards Notice | (versión en español) - Reviewed 2021
- Procedures for Resolving Complaints | (versión en español) - Reviewed 2021

### Due Process Hearing

- Due Process Hearing Parent Guide | (versión en español)
- Due Process Hearing Request Form (Fillable) - Reviewed 2020
- Due Process Hearing Request Form (Printable) | (versión en español) - Reviewed 2020
- Expedited Due Process Hearing - Discipline Related Form (Fillable) - Reviewed 2020
- Expedited Due Process Hearing - Discipline Related (Printable) | (versión en español) - Reviewed 2020

Facilitation Request Form

Mediation Request Form

State Complaint Form

Due Process Hearing Request Form

# Questions



**Kimberli Shaner** | Dispute Resolution Coordinator  
Idaho State Department of Education  
650 W State Street, Boise, ID 83702  
208.332.6914  
[kshaner@sde.idaho.gov](mailto:kshaner@sde.idaho.gov)  
[www.sde.idaho.gov](http://www.sde.idaho.gov)

**Elizabeth Congdon** | Dispute Resolution Program Specialist  
Idaho State Department of Education  
650 W State Street, Boise, ID 83702  
208.332.6800  
[econgdon@sde.idaho.gov](mailto:econgdon@sde.idaho.gov)  
[www.sde.idaho.gov](http://www.sde.idaho.gov)



**IDAHO**  
STATE DEPARTMENT OF EDUCATION

***Idaho State Department of Education***

DEBBIE CRITCHFIELD, SUPERINTENDENT OF PUBLIC INSTRUCTION





# Resources for the Alternate Universe

Karren Streagle, Ph.D.

Alternate Assessment & Low Incidence  
Disabilities Coordinator



# Areas of Support



- Idaho Alternate Assessment (IDAA)
  - IDAA participation criteria
  - Test administration
  - Teacher support
- IDAA participation monitoring
  - 1.0% cap on IDAA participation
  - IDAA participation oversight & support
- Medicaid School-Based Services

# IDAA Resources



- [SDE Special Education Manual webpage](#)
  - IDAA Participation Worksheet
  - Chapter 5 Resource Materials
- [Students with Significant Cognitive Disabilities topic page](#)
  - Instructional resources
  - IDAA materials and resources
  - 1.0% Cap materials
- [SDE Assessment & Accountability webpage](#)
  - [Special Education and IDAA webpage](#)



# Resources for the Medicaid Sandbox

Karren Streagle, Ph.D.

Alternate Assessment & Low Incidence Disabilities Coordinator

# Medicaid School-Based Services Resources



- [School-Based Medicaid topic page](#)
  - *Medicaid SBS Reference Guide 2023-24*
- [Clarifications page](#)
  - Searchable Q & As from the field
- [Online Medicaid SBS Clarification form](#)
- Department of Health and Welfare
  - [Medicaid School-Based Service Providers webpage](#)
  - [Training, Resources, and Forms webpage](#)

# Clarifications Process



When you have a question about Medicaid SBS:

1. Start with the *Medicaid SBS Reference Guide*
2. Search the [Clarifications page](#)
3. Submit [online Medicaid SBS Clarification form](#)
4. Response typically within a week to 10 days
  - Collaboration between Karren and Almira Mackaben, Medicaid Program Policy Analyst for SBS

# Questions?

**Karren Streagle, Ph.D.** | Alternate Assessment & Low Incidence Disabilities Coordinator

Idaho State Department of Education

650 W State Street, Boise, ID 83702

208.332.6824

[kstreagle@sde.idaho.gov](mailto:kstreagle@sde.idaho.gov)

[www.sde.idaho.gov](http://www.sde.idaho.gov)



**IDAHO**  
STATE DEPARTMENT OF EDUCATION

***Idaho State Department of Education***

DEBBIE CRITCHFIELD, SUPERINTENDENT OF PUBLIC INSTRUCTION



**I look forward to  
working with you!**





**IDAHO**  
STATE DEPARTMENT OF EDUCATION

# Support & Monitoring

Debi Smith Coordinator



***Idaho State Department of Education***

DEBBIE CRITCHFIELD, SUPERINTENDENT OF PUBLIC INSTRUCTION

Presentation Title | 63

# Important Resources & Reminders



Resources

Links

Contact Us

The Special Education Directors topic area has been designed specifically for special education directors of school districts across the state of Idaho. Please contact the special education director in your district regarding information on this page.



[Download the course syllabus to learn more](#)

# Important Resources & Reminders



- Did you receive an email from the CTT about indicators 11 or 12?
- Do you know how to access the CTT?
- Do you know how to access the Secure Server?

**Are you feeling overwhelmed?**

# The SDE & SESTA Are Here To Help



**HELP IS ON THE WAY!!**

# Questions





# The SDE Special Education Team

**Chynna Hirasaki**

Special Education Director  
(208) 332-6806

**Alisa Fewkes**

Data & Reporting Coordinator  
(208) 332-6919

**Lisa Pofelski-Rosa**

Financial Specialist Principal  
Funding & Accountability  
(208) 332-6916

**Israel Silva**

Contracts & Fiscal Financial Specialist,  
Senior  
(208) 332-6910

**Melissa Knutzen**

Administrative Assistant  
(208) 332-6896

**Kailey Bunch-Woodson**

State Personnel Development Grant  
Coordinator

**Randi Cole**

Secondary Special Education Coordinator  
(208) 332-6918

**Debi Smith**

Support & Monitoring Coordinator  
(208) 332-6915

**Dr. Karren Streagle**

Alt Assessment/Low Incidence  
Disabilities Coordinator  
(208) 332-6824

**Shannon Dunstan**

Special Education Early Childhood  
Coordinator  
(208) 332-6908

**Kimberli Shaner**

Dispute Resolution Coordinator  
(208) 332-6914



**IDAHO**  
STATE DEPARTMENT OF EDUCATION

**Vacant**

MTSS/Data Analysis & Support  
Coordinator  
(208) 332-6933

**Elizabeth Congdon**

Dispute Resolution Program Specialist,  
Senior  
(208) 332-6912

***Idaho State Department of Education***

DEBBIE CRITCHFIELD, SUPERINTENDENT OF PUBLIC INSTRUCTION